



# PRESIDENTIAL TASK FORCE COVID-19 BULLETIN

COVID-19 | LOCKDOWN

Issue 8 | Friday, 10 April 2020

DAY 8  
OF 28



## Botswana records Seven NEW Positive COVID-19 Cases

**B**otswana has recorded 7 new cases of COVID-19 bringing the total number of confirmed cases to 13.

Briefing Members of Parliament (MP) on Thursday, the Minister of Health and Wellness Dr Lemogang Kwapo said among the 7 is a nurse who was on duty screening MPs before commencement of Wednesday's special meeting.

The minister urged all to remain calm and take heed of advice from health officials.

## State of Emergency endorsed

Parliament has endorsed extension of state of emergency by six months as requested by President Dr Mokgweetsi Masisi. Earlier on, the President noted that the extension would enable the country to direct focus on the fight against COVID-19. Parliament convened a two-day special meeting to consider the request.

### CURRENT SITUATION IN NUMBERS

09/04/2020

Lab Tests Performed & resulted	2527
Negative Cases	2514
Positive Cases	13
Total Deaths	1
New Confirmed Cases	7

PREVENT THE SPREAD  
OF THE CORONAVIRUS (COVID-19)



WASH HANDS AFTER  
COUGHING OR SNEEZING

# COVID-19 CASE PROFILE | Latest 7

1. 50-year-old male was amongst a group of ten who had traveled to Basingstoke, UK on February 29 and returned on March 21. Contact tracing has been done and two of his contacts have also tested positive of SARS-COV-2. They are all well

2. 37-year-old female and her 41-year old partner who had traveled to UK and returned on March 28. They are quarantined at Cresta lodge in Gaborone. They are well and asymptomatic

3. 37 year-old male, most likely community transmission health worker/ nurse in greater Gaborone DHMT, apparently neighbour of a close contact to a known SARS-COV-2 positive He was duty at special Parliament

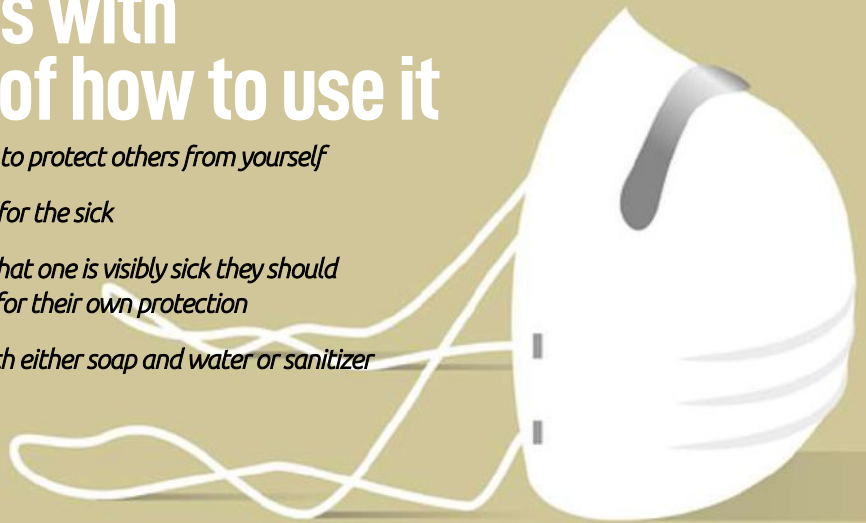
4. 28-year-old male, Motswana, contact of someone positive for SARS-COV-2. He is well and asymptomatic. Contract tracing is ongoing

5. 34-year-old Masunga man who went to UK on February 29 and returned on March 22. He is in home quarantine at Siviya. He is well and asymptomatic. Contact tracing is ongoing

6. 53-year-old man traveled to Pretoria, South Africa on March 23 and returned on March 24. He is well and asymptomatic. Contact tracing is currently being done

## Mask use comes with the knowledge of how to use it

- Should only be used by those who are sick to protect others from yourself
- Can also be used at home by those caring for the sick
- For frontiers in public space, in the event that one is visibly sick they should immediately issue a mask to the individual for their own protection
- Before putting on a mask, clean hands with either soap and water or sanitizer
- When wearing a mask;
  - Use it only once
  - Discard after taking off
  - Do not touch it
  - Always practice social distancing and hand hygiene.



## Ngami DHMT releases people from quarantine

Ngami DHMT Coordinator, Dr Malebogo Kebabonye says they have discharged 15 people from the mandatory quarantine. "We had a total of 18 people in facility based quarantine and three are still being monitored while the rest have been discharged home as they tested negative."

Dr Kebabonye also said they have opened a District Call Centre where they mostly receive calls on business and permits, psychosocial support and medical consultations for people who suspect they have COVID-19 symptoms.

Dr Kebabonye



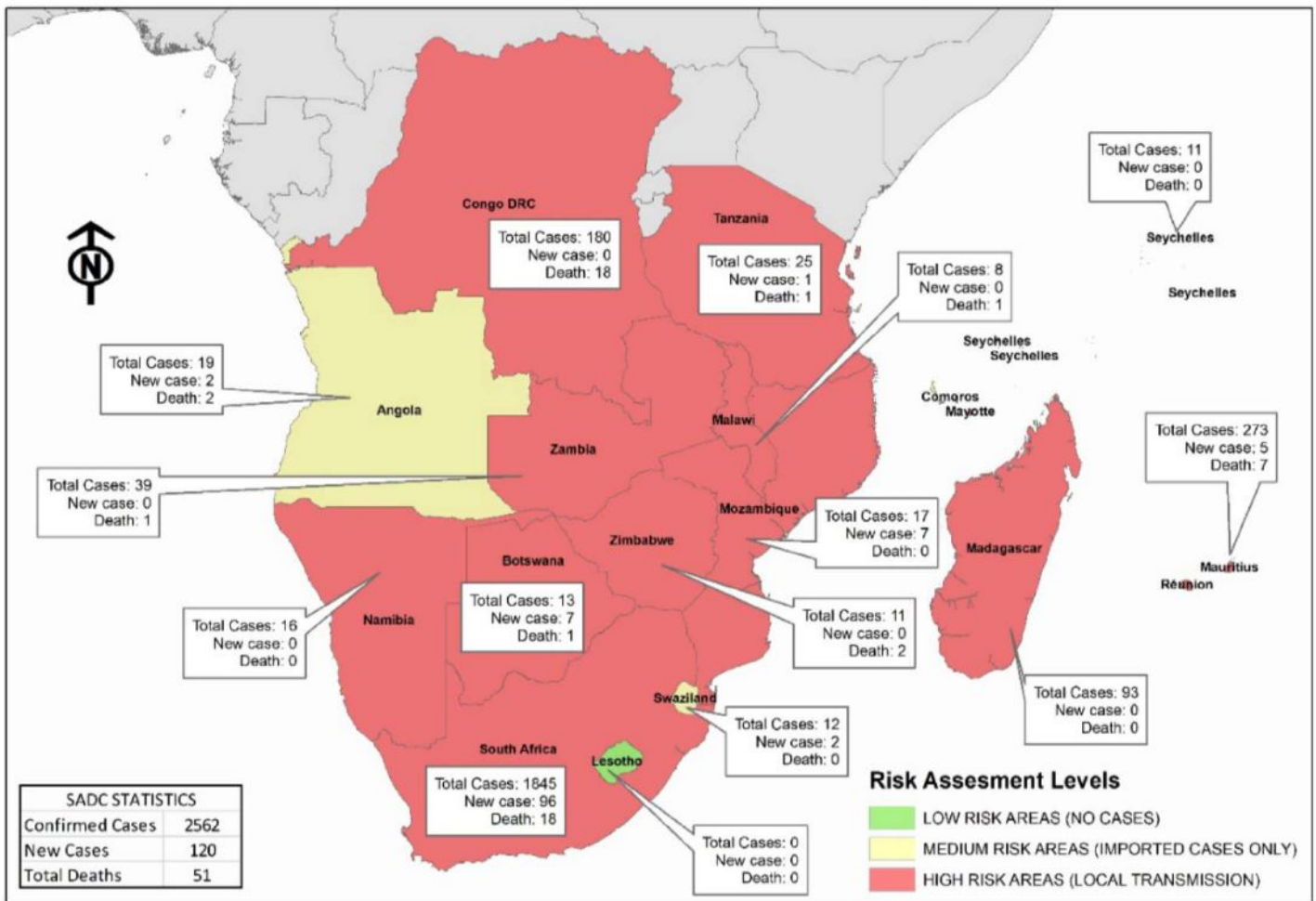
Health personnel in Personal Protective Equipment

THE NATIONAL EMERGENCY OPERATION CENTRE

Tollfree: 0800 600 111 | Telephone: 369 8337 | E-mail: neoc@gov.bw  
The NEOC is located on the 4th floor at the Ministry of Defence Justice and Security.



SADC risk assesment on COVID-19 as of 09 April 2020, 12:04(GMT), SOURCE: (worldometers.info/coronavirus/)



### Transmission explained

Botswana has registered its first community transmitted case of COVID-19. It is worthwhile to note that case classifications are based on WHO case definitions for COVID-19.

WHO transmission classification may be subject to reclassification as additional data become available. Countries, territories or areas experiencing multiple types of transmission are classified in the highest category for which there is evidence. Of importance;

### Imported Case

According to WHO, imported cases only indicate locations where the source of infection is within the reporting location.

### Local Transmission

In simple terms, this is when an infected individual transmission can be linked to an imported case. WHO says local transmission indicates locations where the source of infection is within the reporting location.

### Community Transmission

This is the situation where an infection on an individual cannot be linked to imported case or any travel history. WHO explains that community transmission is evidenced by the inability to relate confirmed cases through chains of transmission for a large number of cases, or by increasing positive tests through sentinel samples (routine systematic testing of respiratory samples from established laboratories).

**COVID-19 Tollfree Lines**  
**16649**  
**0800 600 111 | 0800 600 740**

*All Members of Parliament and those who attended the special will be quarantined. Director Health Services Dr Malaki Tshipayage said they will go on self-isolation within greater Gaborone for contact tracing.*