



# PRESIDENTIAL (COVID-19) TASK FORCE BULLETIN

COVID-19 | STATE OF EMERGENCY

Issue 108 | Monday, 31 August 2020

Day 151

## How the COVID-19 Pandemic Impacted the Transport Industry

Photo Cred. Thato Motlhaping

**C**hairperson of Botswana Bus Operators Association Mr Tirafalo Mponang says the transport industry is one of the sectors which is extremely impacted by COVID-19.

In a Botswana Television COVID-19 programme, Mr Mponang said one of the biggest impacts was the reduction in passenger transport demand, due to lockdowns that was imposed as a measure to contain the spread of the Virus.

Mr Mponang said the taxi industry operated under

*Continues on Page 2*

COVID-19 Confirmed Cases worldwide

# 25,051,178

@ Johns Hopkins University & Medicine 30/08/20



**CORONA VIRUS IS STILL  
A SERIOUS THREAT!**

## GAKOLOGELWA

Inviting a friend or two for a drink  
Can quickly lead to multiple guests

**BUT REMEMBER...**

What we are up against needs caution!  
Avoid chill sessions  
Stay safe

*Own your space. Own your health!*

THE NATIONAL EMERGENCY OPERATION CENTRE

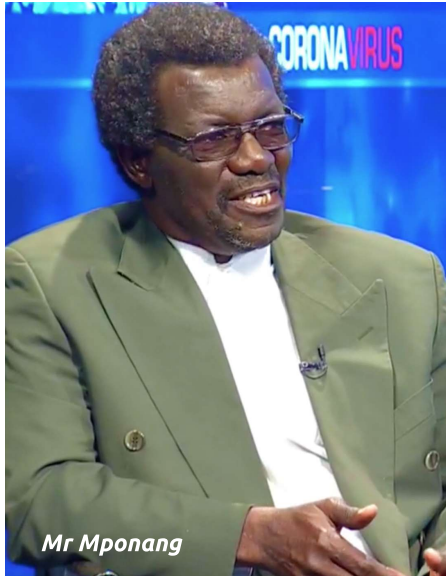
Tollfree: 0800 600 111 | Telephone: 369 8337 | E-mail: neoc@gov.bw

The NEOC is located on the 4th floor at the Ministry of Defence Justice and Security.



# How the COVID-19 Pandemic Impacted the Transport Industry

From Page 1



the set national guidelines during the lockdown with only transportation of essential service workers being the only ones permissible.

He said the decision restricted buses and taxi operations which led to an economic strain on the sector. He said the sector was finding it hard to cover their running costs and sustenance.

Mr Mponang said the association is adhering to the protocols of social distancing, hand washing or sanitizing commuters and taking



register of their customers.

He said although they are adhering to the COVID-19 protocols and guidelines, he cited that there are challenges they are experiencing such as taking temperatures of commuters. He said buses operators are not adequately trained.

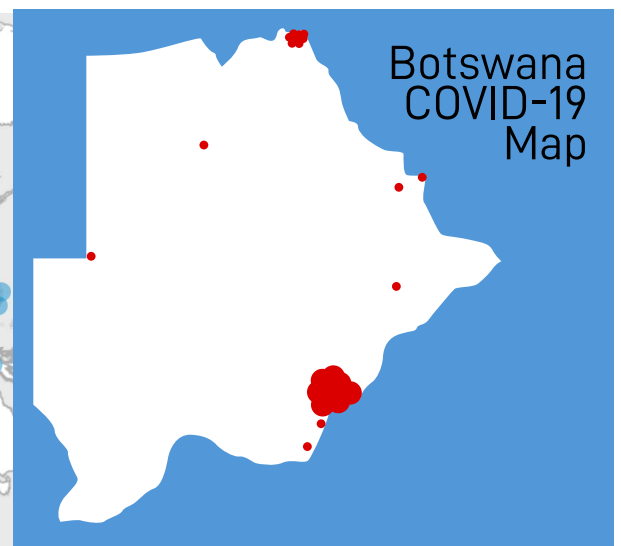
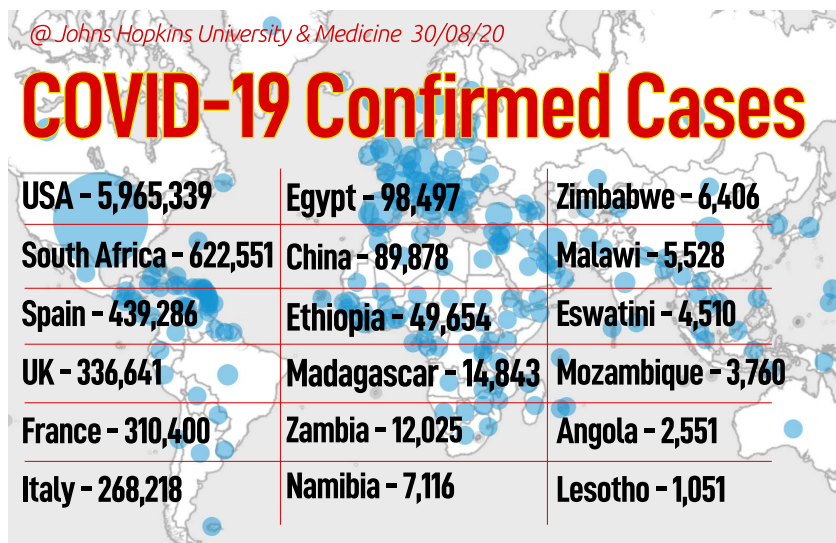
For his part, the Director of Road Transport and Safety, Mr Bokhutlo Modukanele highlighted that the public transport sector in general is a fundamental part and plays a critical role in the country's

economy. However he noted that it was important for government to safe guard the health of commuters.

He noted that as much as they were adversely affected financially, the sector will experience a swift recovery and a suave transition to normalized operating activities as government has eased a lot of restrictions. He said schools have resumed, government ministries and the private sector and these will positively bring the situation to normalcy.

Meanwhile according to the Government Gazette published recently, public fares for shared taxis will be P 6.00, Combis P 5.00 and Special Taxi P 29.00 per trip. The Gazette further states that long-distance for gravel and sandy road will be 33 thebe per km while for bitumen road will be 30 thebe per km respectively.

Public transport fares will increase with effect from September 1 2020.



# WAGE SUBSIDY GOBBLES OVER P800 MILLION FROM THE COVID-19 RELIEF FUND

**COVID-19 relief fund contributions currently stand at P 2.125 billion, says Ministry of Finance and Economic Development permanent secretary Dr Wilfred Mandlebe.**

Appearing before the Public Accounts Committee (PAC) on Wednesday, Dr Mandlebe said government contributed P2 billion while P125 million was donated. To date, he said, 70 per cent of the total amount, which translates into P1.5 billion, had been disbursed leaving a balance of P629 million.

Dr Mandlebe said the money was allocated to health, education, repatriation, and wage subsidy and food relief.

In addition, he said, a total of P268 551 020.33 was used for health supplies including accommodation and catering, contact testing, temporary staff for COVID-19, tests, reagents and supplies, protective clothing, freighting samples and tab commodities.

A budget of P807 277 570.45 was used for wage subsidy from April to June while food relief was allocated P350 870 083, he said. Some P58 200 748 was used for Safety Health and Environment education and psychological support, whereas P11 099 679.10 went to diaspora citizen support in which P916 576 was used for repatriation through Ethiopian Airways and P10 183 103 went to external student financial support, he said.



Dr Mandlebe said government formulated an economic response plan to cushion the impact of COVID-19 on labour hence the wage subsidy and provided guarantee insurance, thereby saving lives.

Noting that this year was economically catastrophic, Dr Mandlebe said the world economy was predicted to contract by 4.9 per cent and slightly recover by 4.5 per cent in 2021 which he said had implications on the Botswana economy. *DailyNews*



**THE NATIONAL EMERGENCY OPERATION CENTRE**

Tollfree: 0800 600 111 | Telephone: 369 8337 | E-mail: [neoc@gov.bw](mailto:neoc@gov.bw)

The NEOC is located on the 4th floor at the Ministry of Defence Justice and Security.





# Zimbabwean Sick Civil Servants Will Be Looked After

***Civil servants who fall ill with Covid-19 while on duty will be fully looked after while they recover, even if there are complications that delay full recovery, with the Government now granting up to six months of sick leave on full-pay as well as paying all medical bills of front-line health staff.***

Generally, civil servants are entitled to 90 days' sick-leave on full salary if they are incapacitated by ill-health.

Although most people recover quickly from Covid-19, with the World Health Organisation's latest protocols giving two weeks as the longest recovery period, there have been cases in other countries

of people who, while no longer infectious, still suffer from complications and recurring symptoms, and this is a worry for front-line medical workers.

But, after realising the sacrifices and the risk associated with the frontline workers and essential services, the Zimbabwean Government says over and above meeting their medical expenses, they will be given more time to recuperate if they need this.

Public Service Commission Secretary Ambassador Jonathan Wutawunashe, who announced the change, said the commission was looking at several adjustments to protect its workers.

"We have adjusted a lot of things to protect our workers, such as for how long can you be ill and still being paid a full salary. It has been adjusted from



90 days to 180 days. It is an adjustment of what is normal.

"There is normal coverage of the medical expenses for all civil servants, and we are also taking care of the medical expenses for frontline workers," he said.

"We have said most Government workers should work from home. You will recall that we said 15

percent should report for their workplaces physically and that move is receiving huge support.

"But we realised that there is a need for more adjustments to cater for those who are going to work, risking their health and life to provide essential services to the people. As Government we are very grateful for the sacrifices and effort being put by our workers during this period," said Ambassador Wutawunashe.

The negotiations are still continuing on a final agreement on improving civil servants' terms of employment including their salaries and wages. Despite disruptions caused by Covid-19 restrictions, the Government is willing to conclude negotiations with unions representing civil servants over wages and other employment terms this month.

This follows President Emerson Mnangagwa's authorization of an interim salary increment and the US\$75 a month Covid-19 relief allowances, paid outside the negotiations, to help civil servants while the details of a new package are being worked out.

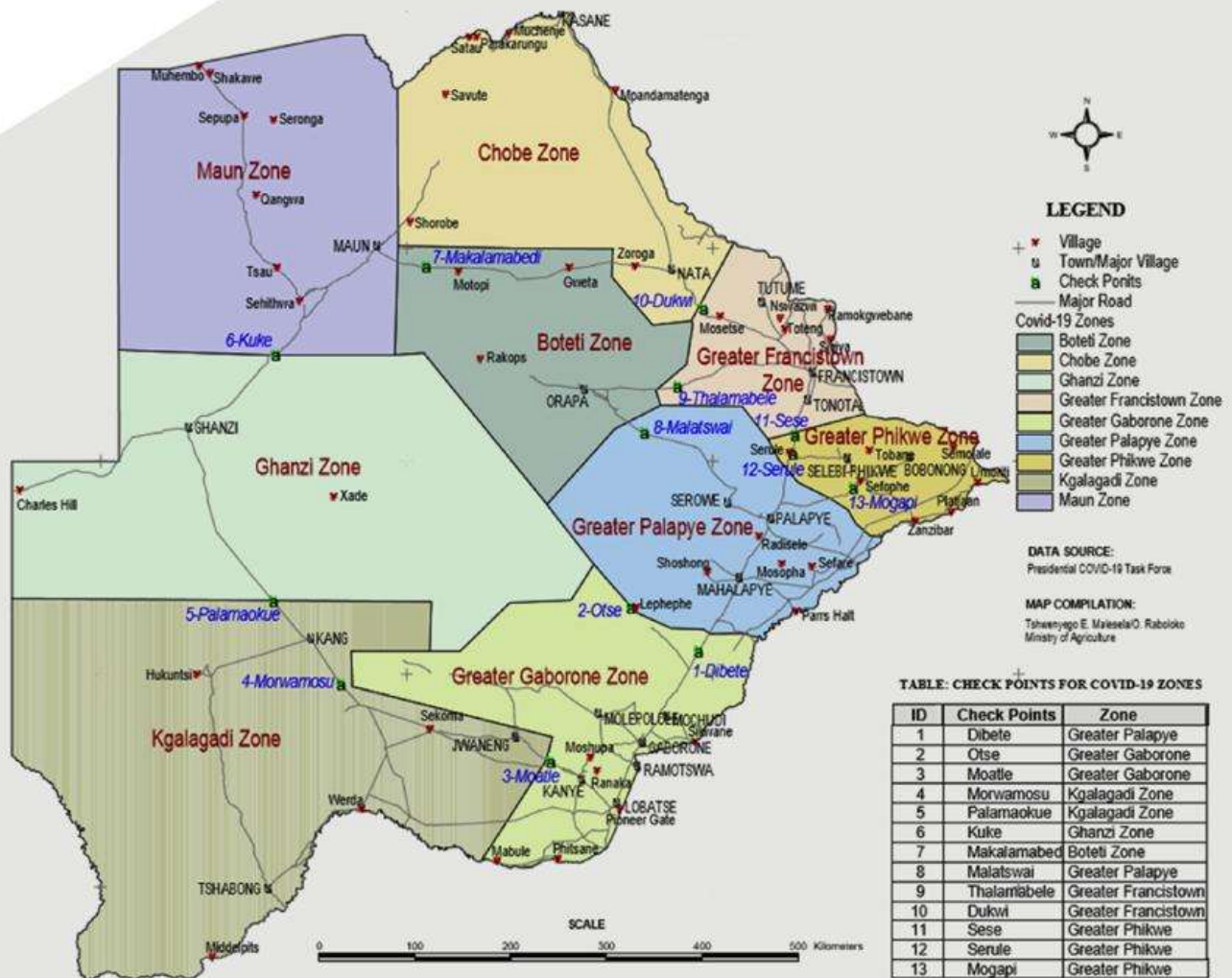
The pay rise and allowances were an interim relief measure pending the outcome of negotiations on employment packages.

**The Herald**



Republic of Botswana

# COVID-19 ZONAL MAP



## KNOW YOUR ZONES

*Extreme Social Distancing ended on 20th May 2020 signaling the end of the three phases which were introduced to curb the spread of the virus in the country. The Presidential Task Force has developed a surveillance plan to monitor the disease. This resulted in the different zones to create cohorts for easier monitoring, easier tracing of contacts of positive cases and to avoid uncontrollable spread across the country.*

*The Inter-Zonal permit is therefore a requirement for people to travel from one zone to the other. Thirteen law enforcement check points have been designated across the country to monitor movements of people.*

*The nine (9) COVID -19 Zones are as follows;*

1. Greater Gaborone zone
2. Greater Palapye zone
3. Greater Selibe Phikwe Zone
4. Greater Francistown
5. Boteti zone
6. Chobe zone
7. Maun zone
8. Gantsi zone
9. Kgalagadi zone