



PRESIDENTIAL (COVID-19) TASK FORCE BULLETIN

COVID-19 | LOCKDOWN

Issue 36 | Thursday, 21 May 2020

Day 49

PHASE III ENDS ON ASCENSION DAY

The Midnight of the 20th of May 2020 marked the end of Phase 3 of the easing of COVID-19 restrictions. As part of the strategic move to contain the spread of the virus, Botswana has been divided into nine (9) zones to restrict movement of people.

The public will be allowed to move freely within a zone without a permit. However, an inter-zonal permit will be required for an individual to move from one zone to the other for what is deemed essential travel.

On the 2nd of April 2020, His Excellency President of Botswana Dr Mokgweetsi E.K. Masisi exercised section 17 of the Constitution and declared a state of Public Emergency.

The President also stated that while the public emergency was in place there will also be Extreme Social Distancing which commenced on the 2nd of April 2020 at Mid-night.

On the 27th of April 2020, His Excellency President Masisi informed Botswana that Presidential Task Force advised on the national lockdown period to be extended by one week starting from 1st May to 7th May 2020 and a further two weeks during which the lockdown would be sequentially eased.

God is our refuge and strength, an ever-present help in trouble. Therefore we will not fear, though the earth give way and the mountains fall into the heart of the sea. Psalm 46:1-2

HAPPY ASCENSION DAY

COVID-19 Confirmed Cases worldwide

4,952,882

@ Johns Hopkins University & Medicine 19/05/20

CURRENT SITUATION IN NUMBERS

20/05/2020

Lab Tests Performed & resulted	14855
Negative Cases	14826
Positive Cases	29
Total Deaths	1
Recoveries	19
Active Cases	9

THE NATIONAL EMERGENCY OPERATION CENTRE

Tollfree: 0800 600 111 | Telephone: 369 8337 | E-mail: neoc@gov.bw

The NEOC is located on the 4th floor at the Ministry of Defence Justice and Security.

Botswana Records 4 New COVID-19 Cases

Presidential (COVID-19) Task Force Deputy National Coordinator Professor Mosepele confirmed 4 new COVID-19 positive cases last night.

This means that Botswana now has a total of 29 confirmed cases, one death and 19 recoveries. The new registered cases are said to be imported from the neighbouring countries.

Professor Mosepele indicated that a surveillance plan to monitor the disease has been put in place where

the country has been divided into different zones to create cohorts for easier monitoring and to avoid spreading across the country.

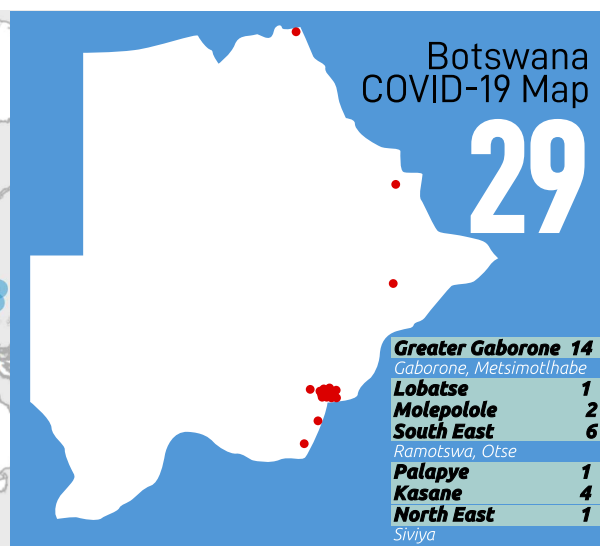
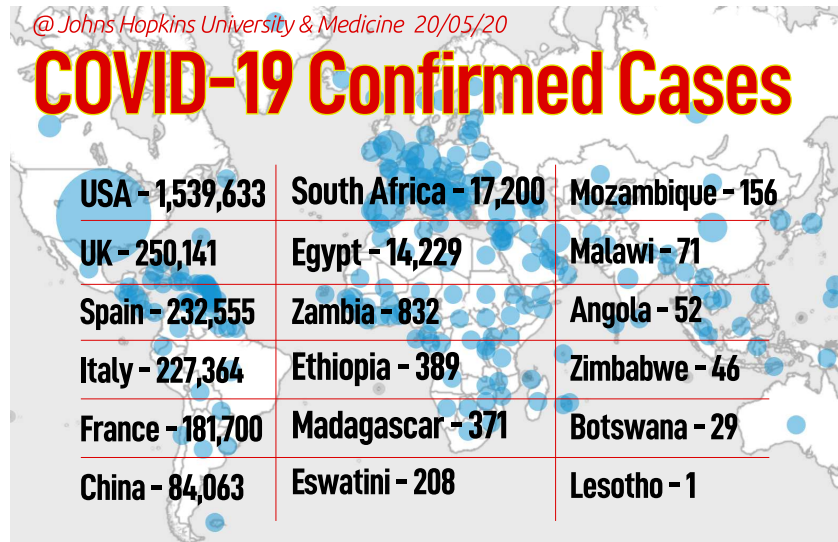
Sentinel sites have been established where testing will be done. Testing will now be done in 4 areas around the country being Kasane, Ghanzi, Francistown and Gaborone making it possible to test 4500 people per day.

He explained that contact tracing will continue to be done and registers have been made a requirement in different

areas for easy tracing of people who might get in contact with the positive cases. Prof Mosepele indicated that lockdown phase assisted in controlling the international transmitted cases that were initially reported and flattened the curve much to a week where there was no reported case until this week with 6 new cases.

The public has been requested to continue adhering to the covid 19 guidelines.

COVID-19 Confirmed Cases



HOW TO PUT ON, USE, TAKE OFF AND DISPOSE OF A MASK

To remove the mask: **remove it from behind** (do not touch the front of mask); **discard immediately in a closed bin**; **clean hands with alcohol-based hand rub or soap and water**



TRUCK MONITORING

18-19 MAY 2020

BORDER	Arrival	Departure
Tlokweng	73	133
Ramatlabama	45	88
Martin's Drift	77	59
Pioneer	13	18
Mamuno	32	45
Kazungula Road Border	32	9
Kazungula Ferry	26	25
Ngoma	0	2
Ramokgwebana	21	4
Mohembo	0	2
Sub Total	319	385
Total		704

THE NATIONAL EMERGENCY OPERATION CENTRE

Tollfree: 0800 600 111 | Telephone: 369 8337 | E-mail: neoc@gov.bw
The NEOC is located on the 4th floor at the Ministry of Defence Justice and Security.

BOTSWANA COVID-19 RELIEF FUND

Secretary for Economic Affairs Ms Grace Muzila says so far P465 million from the COVID-19 Relief Fund has been used.

She said P249 million was used on wage subsidy, P150 million on food hampers and temporary workers while P67.1 million was used for medical supplies. The remaining balance from the Fund is about P1.6 billion.

Ms Muzila noted that food hampers given to vulnerable groups were donations in kind, and this helped to reduce the amount spent.

She said currently there are requests which will be prioritised and considered for businesses wage subsidy.



Republic of Botswana

SPECIAL NOTICE OUTDOOR EXERCISES

THE PUBLIC IS INFORMED THAT FROM TODAY, 15TH MAY 2020, OUTDOOR EXERCISES WILL BE ALLOWED WITHIN ONE'S NEIGHBOURHOOD ONLY FROM 0600HRS TO 0900HRS AND FROM 1600HRS TO 1800HRS.

FOLLOWING ARE THE OUTDOOR ACTIVITIES ALLOWED UNTIL FURTHER NOTICE:



JOGGING



WALKING



CYCLING & OTHER
OUTDOOR EXERCISES

PLEASE NOTE THE FOLLOWING

- * GROUP OR TEAM ACTIVITIES ARE NOT ALLOWED
- * A PERMIT WILL BE REQUIRED IF ONE NEEDS TO TRAVEL TO THE GYM OR ANY OTHER PLACE OF EXERCISE THAN THEIR NEIGHBOURHOOD

* At all times, all protocols must be observed: social distancing, masks or some sort of covering for the mouth and nose must be worn.



f t BWGovernment

MINISTRY OF AGRICULTURAL DEVELOPMENT AND FOOD SECURITY

COVID -19 GUIDELINES FOR AGRICULTURAL HAWKERS AND STREET VENDORS

The Ministry of Agricultural Development and Food Security together with its stakeholder representatives have pledged to prevent the spread of Coronavirus through produce by ensuring that agricultural hawkers and street vendors adhere to the set guidelines.

This is part of the ministry's efforts to reduce contamination of products due to improper handling which can result in possible extreme infection.

The following are the guidelines:

1. Provision of hand washing station for staff and customers.
2. Thorough hand wash with soap after handling money and before handling produce.
3. Caution customers to avoid unnecessary touching of produce and encourage use of utensils designed to handle food.
4. Wear masks at all times and ensure compliance by customers as well.
5. Practice safe social distancing (at least 1 metre apart)
6. Regular disinfection of work places.
7. Adherence to national COVID-19 hygiene rules and regulations.
8. Ensure that produce is washed thoroughly.

The Lockdown Extended in Phases

Phase I

The current lockdown conditions period will be extend by one week, from May 1st to May 7th, 2020. During this period, The Government will also develop and finalize regulations for a phased lifting of lockdown rules in low risk sectors.

Phase II

Starting from May 8th to May 14th, Government, will lift in a phased manner, some lockdown rules while at the same time introducing additional plans for further lifting of the remaining lockdown rules.

Phase III

From May 15th to May 22nd, which will be the final week of the lockdown extension, Government will lift the remaining rules from the original lockdown rules implemented on March 30th, 2020.

EDITORIAL TEAM

Editorial Advisor: Pearl Ramokoka | **Editor:** Treasure Mothobi
Content Producers: Lorato Okaile | Donnell Kutlape | Chandapiwa Baputaki | Fortune Ketthaetse



Republic of Botswana

During this challenging time, our truck drivers put their lives on the line for us everyday to make sure we have our essential supplies.

They are us. We are them.



**DON'T STIGMATISE THEM
APPLAUD THEM**