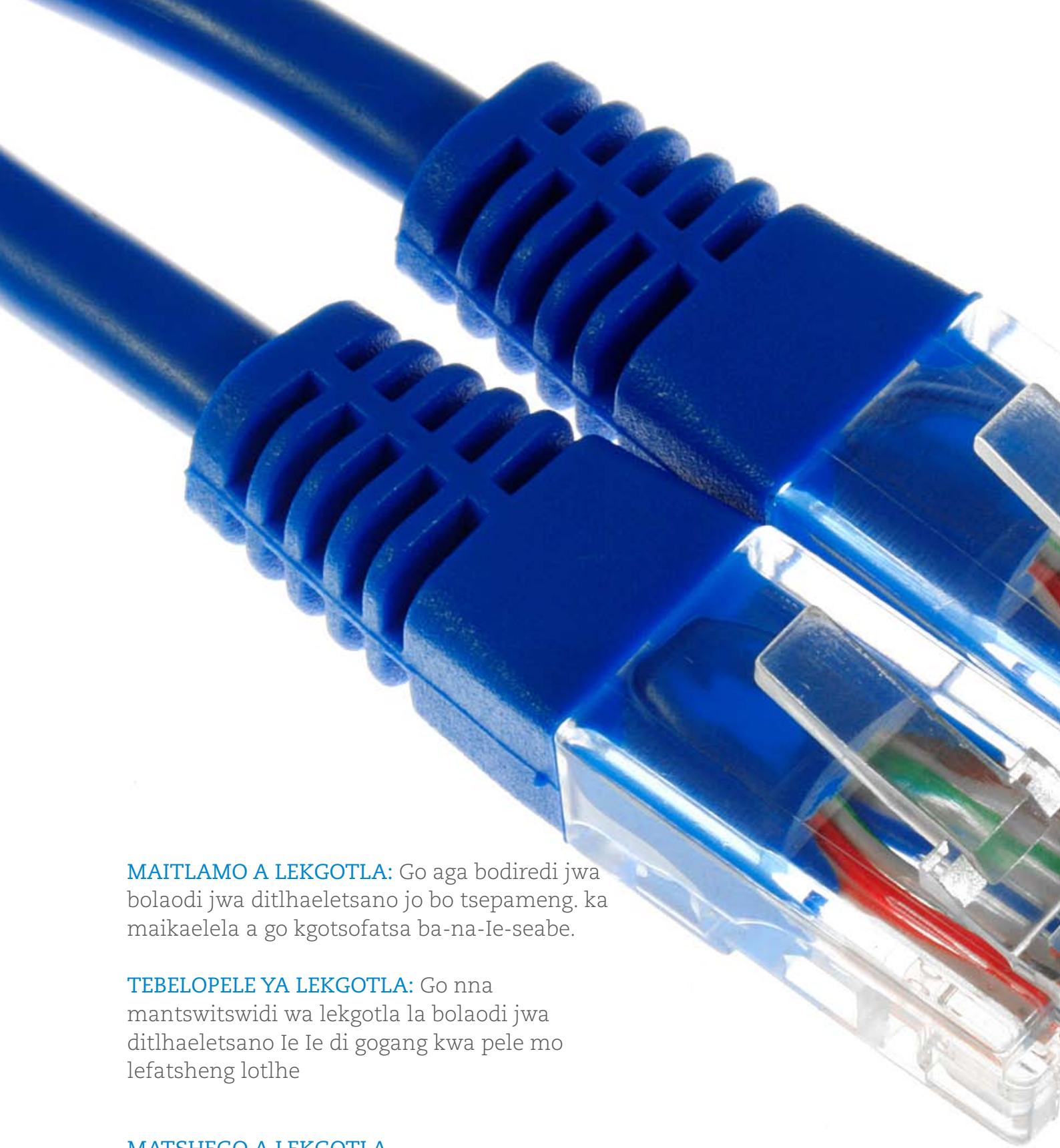


BOTSWANA
TELECOMMUNICATIONS
AUTHORITY
PEGO YA NGWAGA

2008





MAITLAMO A LEKGOTLA: Go aga bodiredi jwa bolaodi jwa ditlhaeletsano jo bo tsepameng. ka maikaelela a go kgotsofatsa ba-na-Ie-seabe.

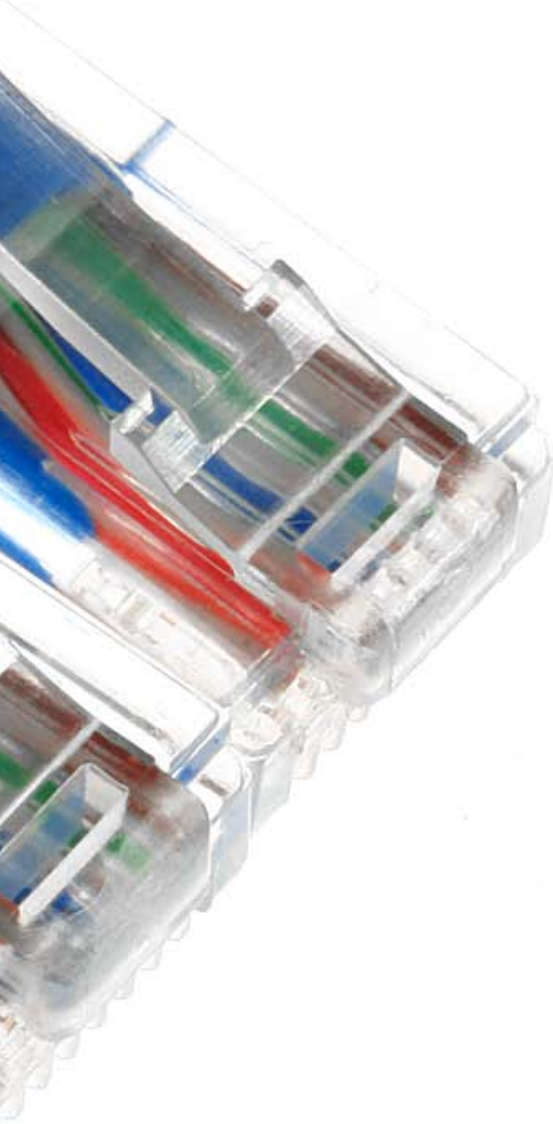
TEBELOPELE YA LEKGOTLA: Go nna mantswitswidi wa lekgotla la bolaodi jwa ditlhaeletsano Ie Ie di gogang kwa pele mo lefatsheng lotlhe

MATSHEGO A LEKGOTLA

Boammaaruri
Go itebaganya Ie batho
Go kgotsofatsa ba-na-Ie-seabe
Ithutuntsho Ie itokafatso
Bodiredi jwa makalana
Maikarabelo a rona mo sechabeng

Diteng

Molaetsa go tswa go Modulasetilo	03
Molaetsa go tswa go Mookamedi Mogolo	05
Board of Directors	06
Management	07
Tsamaiso ya Lekgotla	10
Makalana a Lekgotla	11
Tshekatsheko ya Boranyane	14
Dikgang tsa Bolaodi jwa Kgaso	16
Tshekatsheko ya Tlhabololo ya Mmaraka	20
Dikgang tsa Molao, Kobamelo le Badirisi	24
Dipuisano le Dikgang tsa go dirisana le Setšhaba	30
Tshekatsheko ya Bodiredi	32
Lekalana la go Dupa Dibuka tsa Madi	36
Tshekatsheko ya tsa Madi	38
Tshoboko	41
Pego ya Madi	42-65
Corporate Information	67





“Diphetogo tsa maranyane mo mmarakeng o di gwetlha makgotla a bolaodi go itepatepanya natso. Ke ka mo khuduthamaga le badiri ba nnang ba tsaya karolo mo diphuthegong le dithuta-puisano tse di itebagantseng le tlhabololo ya mmaraka.”

Dr John Mothibi, Modulasetilo

Molaetsa go tswa go Modulasetilo

Pego e ya tiriso madi a ngwaga wa 2007/2008 ke ya ntlha fa e sale Tona wa Lephata la Ditlhaeletsano, Maranyane le Boitseanape a ntsha kitsiso ya go golola mmara wa ditlhaeletsano go ya pele. Kitsiso e ya ga Tona ke kgwetlho go BTA go tsisa phadisanyo mo mmarakeng. Ka jalo, bagwebi ba ditlhaeletsano ba ne ba abelwa diteseletso tse di sa ba tlameng go supa gore ba a go gweba ka motlhale ofe wa ditlhaeletsano ebile go sa kgatlhalesege gore ba dirisa didirisiwa dife. Diteseletso tse di letla bagwebi go gweba ka ditirelo ka go farologana – e ka nna tsa megala ya disele, mesokela-tsebeng kgotsa tsa ditirelo tsa dikitso.

Badirisi ba ditirelo tsa ditlhaeletsano ba setse ba akola dingwe tsa dipelo tsa mokgwa o mosha wa diteseletso, mme go solofelwa fa ba tlaa akola go feta fa mo isagong. BTA e dumela fa tsamaiso ya kabo diteseletso e tshwanetse ya nna e fetolwa go tsamaelana le dinako mo mmarakeng wa ditlhaeletsano.

Diphetogo tsa maranyane mo mmarakeng o di gwetlha makgotla a bolaodi go itepatepanya natso. Ke ka mo khuduthamaga le badiri ba nnang ba tsaya karolo mo diphuthegong le dithuta-puisano tse di itebagantseng le tlhabololo ya mmara. BTA e anywa megopolo ya go itebaganya le dikgwetlho tsa bolaodi tse di etleng di tlhage mo bokopanong jwa motlhale o. Mo makgethong a le mmalwa, dikgwetlho tsa bolaodi jwa ditlhaeletsano bo tlhoka tshwaragano magare ga mafatshe, makgotla a bolaodi le ba-na-le-seabe ba bangwe mo mmarakeng.

Ka diphuthego tse, BTA e fitlhetse go le go ntsi fa e sale e tlhomiwa. Le fa go ntse jalo, go le go ntsi go santse go tlaa fitlhelwa jaaka ditopo tsa ditirelo tse di botoka ka ditlhwatlhwa tse di lolameng di gola. Maranyane a masha a tsisa ditshono tse di botoka go badirisi ba ditirelo tsa ditlhaeletsano. Ka jalo, ke tumelo yame e e nitameng gore BTA e tlaa tsewelela e dira ka thata go itebaganya le dikgwetlho tsa ditlhaeletsano tse di tlhagang.

Ke tumelo yame gore maduo a Lekgotla la Bolaodi jwa Ditlhaeletsano mo Botswana go fitlha ka jeno ke sekao sa boineelo le bonatla jwa Khuduthamaga, Baokamedi le Badiri.



Dr. John Mothibi
Modulasetilo



“Go a itumedisa gore re agile motheo o dikokomane tsa rona di tlaa akolang maduo a ditlhabololo tse di tsiwang ke maranyane a dikitso le ditlhaeletsano.”

Thari G. Pheko, Mookamedi Mogolo

Molaetsa go tswa go Mookamedi Mogolo

Loeto lame mo bolaoding jwa mmara wa ditlhaeletsano le nnile le le gwetlhang mme le kgotsofatsa, jaaka ke tshwaragane le namane ya go etelela lekgotla la bolaodi mo isagong. Tiro e e ne ya tlhoka kemo nokeng ya Khuduthamaga, Botsamaisi le Badiri. Re ne ra tshwanelwa ke go tshwara dipuisano le ba-na-le-seabe ba mhama wa ditlhaeletsano, ka maikaelelo a go netefatsa gore botlhe ba ba nang le seabe ba podi matseba gore re kgone go sega isago e e botoka ya mhama.

Kabo ya diteseletso tse tharo tsa mofuta o o sa supeng motlhale wa ditirelo kgotsa didirisiwa e ne ya nna nngwe ya dikgwetlho tse Lekgotla le neng la lebagana le tsone mo malatsing ame a ntlha mo go lone. Go a itumedisa gore ba-na-le-seabe ba ba ileng ba ikopela diteseletso tse ba dirile jalo kwa ntle ga tiego. Kgwetlho jaanong e lebagane le bone gore ba diragatse ditsetla tsa diteseletso tsa bone ka go kgotsofatsa dikeletso tsa badirisi.

Re tswelletse ka go gatelela botlhokwa jwa gore BTA e rotloetse ditirelo tse di bofefo ka ditlhwatlhwa tse di lolameng mo lefatsheng leno ka bophara, mme gape bagwebi ba boelwa mo dipeeletsong tsa bone. Tsela e e ka dirang gore dikgwetlho tse di fenngwe ke ka go nna le setlhopho se se boineelo sa badiri. Ka go tsibogela se, re ne ra dira diphetogo dingwe, mme bagolwane ba nna le bokopano go sekaseka dintlha tsa botsamaisi go lebilwe lenaneo la tokafatso maduo. Ke na le tshepo ya gore loeto le re le simolotseng le tlaa unywa maduo a a nametsang.

Ke dumela fa go tshwaraganela kgetsi ya tsie le ba-na-le-seabe e le yone tsela e mhama wa ditlhaeletsano o tlaa gatelang pele ka yone. Go a itumedisa gore re agile motheo o dikokomane tsa rona di tlaa akolang maduo a ditlhabololo tse di tsisiwang ke maranyane a dikitso le ditlhaeletsano. Ga re kake ra tswelera ka go letlelela lefatsho la rona go salela kwa morago, re iphitlha ka gore re batla go dira dilo jaaka borraarona mogolo ba ne ba dira. Ke dumela thata mo puong e e reng, “o ka se fetole tse di diragetseng, mme o ka dira dilo dingwe tse di tlaa betlang isago.” Ka jalo, ke dumela fa rotlhe re tshwanetse ra itlama go fitlhelela se.

Mo mererong ya lefatshafatshe, Lekgotla la BTA le ne e le lengwe la maloko a Komiti e e Faphegileng le le romilweng go tswa ka ditselana tse di tlaa tlhomamisang isago ya itsholelo ya Makgotla a Bolaodi jwa Ditlhaeletsano jwa Kgaolo ya Borwa jwa Aforika (Communications Regulators Association of Southern Africa – CRASA).

Ditshwetso tsa Komiti e di ne tsa dumalwana go tsenngwa mo tirisong kwa Bokopaong jo bo Faphegileng jwa CRASA kwa Maputo, Mozambique ka Lwetse 2007. BTA gape e ne ya tsaya karolo mo diphuthengong tsa bolaodi jwa ditlhaeletsano ka go farologana jaaka tsa Lekgotla la Ditlhaeletsano la Mafatshe a Selekane (Commonwealth Telecommunications Organisation - CTO) le Lekgotla la Mafatshefatshe la Ditlhaeletsano (International Telecommunication Union – ITU).



Thari G. Pheko
Mookamedi Mogolo

Maloko a khuduthamaga



Dr J. Mothibi

MSC (Mechanical Engineering) Tech University of Scotia, MBA, Project Management, University of Dundee P.h.D. (Eng. Management), University of Cape Town. Director of Quality Divisions (Pty) Ltd.



Dr M. A. Mpotokwane

BA (Geography and Sociology) - University of Botswana; MSc (Rural Surveys) International Institute for Aerial Surveys and Earth Sciences - the Netherlands: PHD (Environmental Sciences) University of Sterling, UK.



Mr R. C. Eaton

BSC (Land Surveying) Cape Town, Currently a Director of various Companies amongst them, Shakawe Irrigation (Pty) Ltd, Tholo Safaris (Pty) Ltd and Mosaico EuroAfrica (Pty) Ltd.



Dr T. Matome

Bcom - University of Botswana;
MSS - Master of Social Sciences
(Accounting and Development
Finance) - University of
Birmingham, UK; PhD - (Finance)
University of Birmingham, UK



Dr T. Nyamadzabo

Secretary for Economic Affairs
BA (Economics and Statistics)
University of Botswana; MA
(Economics) University of Delaware,
USA; Phd (Economics) American
University, Director of BIDPA,
DPCF and Council Member at the
University of Botswana.

Boeteledipele



Mr. T. G. Pheko
(Chief Executive)

BSc (Hons), (Business Finance & Economics), MSc (Information Systems)



Mr. M. O. Tamasiga
(Deputy Chief Executive)

BA, (Economics & Statistics), MBA
(Corporate Finance)



Mr. T. Mosinyi
(Director Engineering Services)

B. Eng, MA (Comms Policy)



Mr. O. Tsiang
(Director Broadcasting Services)

BA Journalism, MA Communications
Research



Mr. M. Mokgware
(Director Market Development
& Analysis)

BA (Economics), MA (Transport
Economics)



Mrs. T. Tau
(Director Legal Compliance &
Consumer Affairs)

LLB, MA (Telecomms)



Mr. T. B. Koontse
(Director Communications & PR)

BA. MA (Int Comms)



Mr. A. N. Mokone
(Director Corporate Services)

BA. Dipl Ed, MA (Public Admin)



Mrs. B. Mine
(Ag. Director Finance)

BCom (Accounting), ACMA

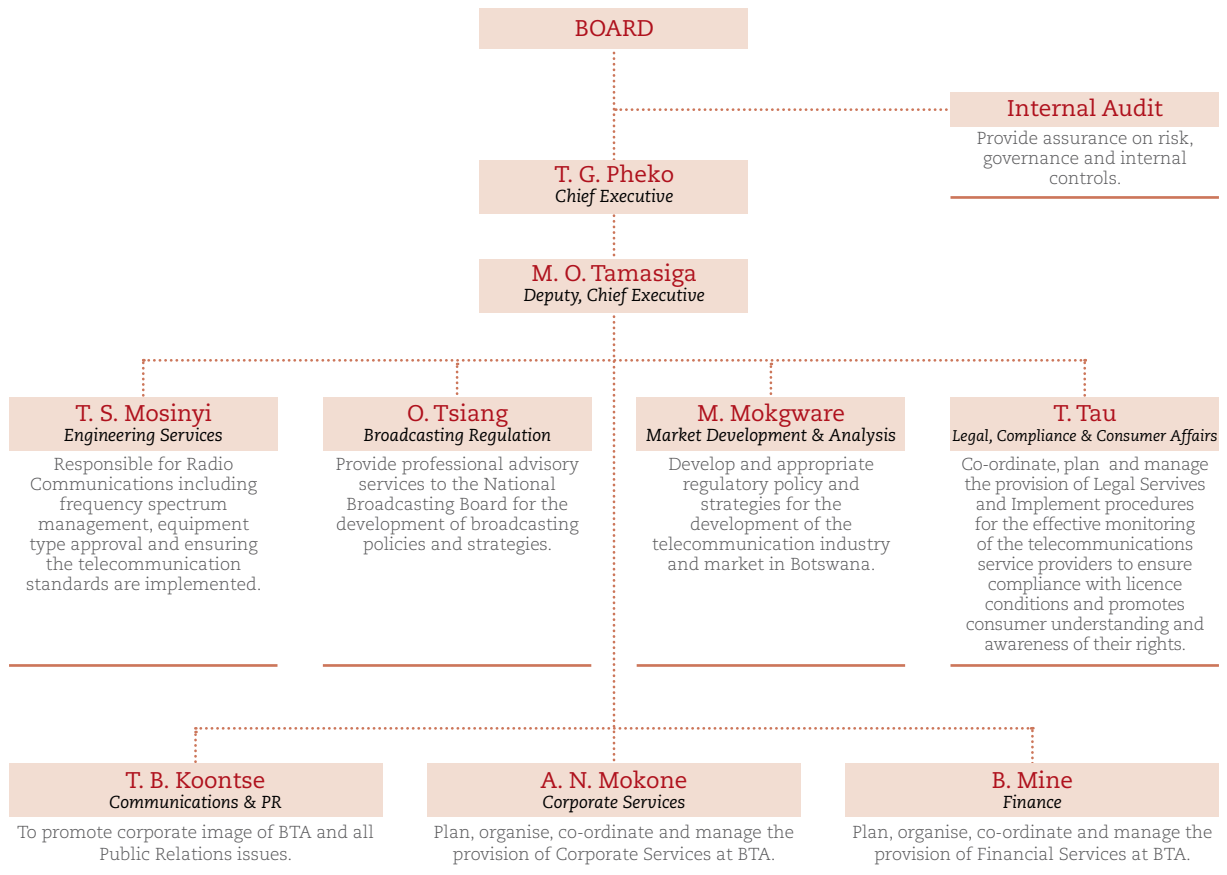


TSAMAIISO YA LEKGOTLA

Mo ngwageng o o sekasekwang o, BTA e ne ya nna le diphetogo dingwe mo motheong wa yone wa botsamaisi.

Go ne ga tlhamiwa phatlha ya Mothusa Mookamedi-Mogolo. Mo godimo ga se, Lekalana le le ikemetseng la go Dupa Dibuka tsa Madi le ne la tlhomiwa mo BTA. Phetogo e nngwe e amana le go tlhomiwa ga Lekalana la Ditirelo tsa Molao, Merero ya Badirisi le Kobamelo Molao morago ga go kopanngwa ga Lekalana la Ditirelo tsa Molao le Lekalana la Merero ya Badirisi le Kobamelo Molao. Makalana a Lekgotla ka nako eno a eme jaana:

Makalana a Lekgotla



Khuduthamaga

Lekgotla le tsamaisiwa ke khuduthamaga, e e nang le Modulasetilo yo e seng modiri wa Lekgotla, le maloko a mangwe a le mane a le one e seng badiri ba Lekgotla. Go tlohphiwa o bo o tlhlongwa go nna leloko la khuduthamaga go dirwa ke Tona wa Lephata la Ditlhaeletsano, Maranyane le Boitseanape jaaka go papametse mo Molawaneng wa Ditlhaeletsano. Maloko a khuduthamaga a tlohphiwa go lebilwe dikitso le maitemogelo a maloko a nang le one. Maloko a khuduthamaga ka jaana a na le dikitso le maitemogelo mo mehameng e e farologanyeng e e amanang le bolaodi jwa ditlhaeletsano jaaka tsa madi, itsholelo, molao, kgwebo le boitseanape. Maloko a khuduthamaga a tlhomiwa lobaka la dingwaga di le nne.

Diphuthago tsa Khuduthamaga

Diphuthago tsa khuduthamaga di rulaganyediwa ruri mo tshimologong ya ngwaga wa madi. Maloko a fiwa sengwe le sengwe se se tshwanetseng gore ba tle ba kgone go ipaakanya nako e santse e le teng mo dikgannyeng tse go tlhokegang gore ba tseye ditshwetso ka tsone. Bontsi jwa dintlha tse khuduthamaga e tsayang ditshwetso ka tsone di ikaegile ka merero ya molao. Mo ngwageng o o sekasekiwang o, Khuduthamaga e nnile le diphuthago di le thataro.

Diphuthago di le tharo mo go tse e ne e le tse di faphegile, di bileditswe go fa taelo mo dintlheng dingwe tsa botlhokwa.

Dikomiti tsa Khuduthamaga

BTA e dira ka dikomiti di le tharo (3) tsa khuduthamaga tse di latelang: Komiti ya Kabo Ditiro, Komiti ya Madi le go Dupa Dibuka tsa Madi le Komiti ya Dikatso.

Komiti ya Madi le go Dupa Dibuka tsa Madi

Modulasetilo wa komiti e ke Dr. T. Nyamadzabo. Komiti e e na gape le leloko la khuduthamaga le le sa direleng mo BTA, le leloko le eseng leloko la khuduthamaga ya BTA. Maikaelelo a komiti e ke go tlhomamisa gore botsamaisi jwa Lekgotla bo tshegetsatsa seemo se se nitameng sa taolo. Ditiro tse dingwe tsa komiti e ke go:

- Sekaseka ditogamaano le ditsamaiso tsa Lekgotla go netefatsa gore ditselana tsa ditsamaiso tsa madi le dibuka di dira sentle ka botswerere;
- Lemoga dintlha tse di botlhabetse mo Lekgotleng, le go netefatsa gore ditselana tsa tiro tse di lebaneng le go lwantsha botlhabetse di dira ka botlalo le botswerere;

Tsamaiso ya Lekgotla (tswelediso)

- Dirisana le botsamaisi jwa Lekgotla mo go sekasekeng meono e e tsamaisang taolo ya madi le dikitso tsa Lekgotla, ditiro tsa batshwara maemo a a kwa godimo le ditirelo tsa tokafatso ditiro;
- Sekaseka dipego tsa madi pele ga di ka isiwa kwa khuduthamageng, go netefatsa gore dipego tse di supa seemo sa Lekgotla sa madi jaaka se ntse;
- Sekaseka dipego tsa madi pele ga di ka isiwa kwa khuduthamageng, go netefatsa gore melawana ya mafatshefatshe ya dipego tsa madi e setswe morago;
- Sekaseka ditogamaano le ditirelo tsa madi, le go lebaleba dipego tse di ntshiwang ke botsamaisi go ya kwa setšhabeng; le
- Sekaseka dintlha tse di sa tlwaelesegang.

Maloko a komiti e ya Madi le go Dupa Dibuka tsa Madi ke a a latelang:

Dr. T. Nyamadzabo
Rre R. C. Eaton
Rre D. Pule – O tlhokafetse
Rre A. A. Bogatsu – O tlhomilwe ka Tlhakole 1, 2008

Komiti ya Dikatsotso

Modulasetilo wa komiti e ke Dr. J. Mothibi. Komiti ya Dikatsotso e na le maloko a le mararo a a sa direng mo Lekgotleng go tswa mo khuduthamageng. Komiti e e na le maikarabelo mangwe, mme mangwe a one ke a a latelang:-

- Go sega tema, go dira ditumalano le go tokafatsa ditogamaano tsa Lekgotla tsa dikatsotso tsa badiri;
- Go ntsha dikopo tsa dikatsotso tsa badiri tse di faphegileng;
- Go sekaseka dintlha tsa dikatsotso le tiro tsa badiri jaaka e laotswe ke khuduthamaga, le go sekaseka seemo sa dikatsotso tsa Lekgotla mabapi le makgotla a mangwe fa go tlhokega; le
- Go fa khuduthamaga megopolo ya mananeo a dikatsotso tsa badiri ba Lekgotla.

Maloko a komiti e ke a a latelang:

Dr. J. Mothibi: Modulasetilo wa Khuduthamaga ya BTA
Dr. T. Matome: Mookamedi Mogolo wa Local Enterprise Authority (LEA)
Dr. T. Nyamadzabo: Mokwaledi wa Tsa Itsholelo kwa Lephatheng la Tsa Madi.

Komiti ya Kabo Ditiro

Dikomiti tsa kabo ditiro tsa BTA di laolwa ke Melawana ya BTA ya Madi. Dikomiti tse tsa kabo ditiro di tlhomilwe ka maikaelelo a go direla kabo ya ditiro tsa dithoto le ditirelo mo pontsheng go sena bokukuntshwane bope. Melawana ya Madi e baya ditselana tse di thusang Mookamedi le dikomiti mo tirong e jaana:-

Mookamedi Mogolo – Go fitlha kwa go P500, 000

Komiti ya Kabo Ditiro ya BTA – P500, 000 go ya go P1 000, 000

Komiti ya Kabo Ditiro ya kwa ntle – Go feta P1 000, 000

Maloko a Komiti ya Kabo Ditiro ya kwa ntle ga Lekgotla ke:

Dr. J. Mothibi
Dr. T. Matome
Dr. M. A. Mpotokwane

Maloko a Komiti ya Kabo Ditiro a BTA one ke:

Rre T. G. Pheko
Rre M. O. Tamasiga
Mme B. Mine

Komiti ya Dikabelo

Khuduthamaga ya BTA e ne ya tlhama komiti e ka maikaelelo a go netefatsa gore dikabelo di fiwa makgotla a a ka fa molaong e bile a le mo letlhokong la dikabelo tse.

Maloko a Komiti e ke:

Rre T. G. Pheko
Rre T. B. Koontse

Ipobolo ya Maloko a Khuduthamaga

Mo phuthegong nngwe le nngwe ya khuduthamaga, maloko otlhe a tlamega go boela seabe se ba nang naso mo dikgwebong ka go farologana. Se se dira gore go netefadiwe gore ditshwetso tsothle tse di tsewang mo bokopanong di bo di tsepame, go papametse gore ga di gogelwe ka fa letlhakoreng la ga ope.

Dituelo tsa Maloko a Khuduthamaga

Maloko a khuduthamaga a duelwa go setswe morago ditselana tsa dituelo tsa puso. Dituelo tsa gompiano di eme jaana:-

Dituelo go ya ka Phuthego

Modulasetilo wa Khuduthamaga P735
Mothusa Modulasetilo P588
Leloko P588

Mokwaledi wa Khuduthamaga

Tiro ya Mokwaledi wa Khuduthamaga ke go direla khuduthamaga jaaka go tlhokega. Ditiro tsa Mokwaledi wa khuduthamaga di papamaditswe mo Molawaneng wa Dikompone (Companies Act). Mokwaledi wa Khuduthamaga o botlhokwa thata mo mererong ya tsamaiso ya Lekgotla. Mokwaledi wa Khuduthamaga mo nakong ya pego e e ne e le Mme T. Tau.

Maikakatlelo le Bokamoso

Pego ya tiriso madi e dirilwe go lebilwe ditsamaiso tse di lolameng tsa Lekgotla. Morago ga ditshekatsheko tse di dirilweng, khuduthamaga e na le tshepo le tumelo ya gore Lekgotla le na le ditsompelo le meamuso e e lekanyeng go ka dira sentle mo dingwageng tse di tlang.

Tsamaiso ya go Hema Bodiphatsa

BTA e sala morago Ditselana tsa COSO (Committee of Sponsoring Organisations) tsa go Hema Bodiphatsa. Ditselana tse di supa, di bo di sekaseka ditsamaiso tsa go hema dintlha tse di ka tsalang diphatsa; mme morago di supe ditselana tsa go baya dintlha tseo leitlho. Tsela e ya go dira e mosola ka e fa ba ba dirang go hema diphatsa mokgwa wa go dira o ba o tihaloganyang. Ka jalo go motlhofo gore botsamaisi bo tshware kgang ya go hema bodiphatsa ka tsela e e tihaloganyesegang le badiri ka kakaretso. Mo nakong eno, botsamaisi bo tshwaragane le go dira Ditogamaano tsa Go Hema Bodiphatsa. Ditogamaano tse di tlaa soboka ditirelo tsotlhe tsa go hema bodiphatsa.

BTA e dumela fa tiro nngwe le nngwe e na le bodiphatsa jwa yone. Ka go na le ditlhabololo tse dintsi mo mohameng wa ditlhaeletsano mo Botswana le lefatshe ka bophara, Lekgotla le lebanwe ke dikgwetlho dingwe tse di ka kgoreletsang go fitlhelela maikaelelo a lone. Ka jalo khuduthamaga e tsaya tsamaiso ya go hema bodiphatsa e le ntlha ya botlhokwa fela thata.

Kamogelo ya Diemo tsa Bodiphatsa

Ntlha e e ama bodiphatsa jo lekgotla le ka bo letlelelang kgalhanong le ditirelo le maikemisetso a lone. Lekgotla la BTA le amogela seemo se se kwa tlase sa bodiphatsa, ka dintlha ka bontsi di sa bewe sebetse.

Ditselana tsa go laola bodiphatsa

- **Tebo ya BTA**
BTA e na le metlhale ya tebo e le mene – tsa madi, ba-na-le-seabe, tse di amang Lekgotla le meamuso ya badiri. Go dirilwe ditshekatsheko tse di amang bodiphatsa jwa dintlha tse tsotlhe mo Lekgotleng. Bodiphatsa jo bo ka tshagang mabapi le dintlha tse bo kwadilwe, mme botsamaisi bo di beile leitlho.
- **Diemo tse di Tlhobaetsang tsa Tsamaiso Lekgotla**
Seemo se se bakiwa ke tatlhegelo e e tsalwang ke ditsamaiso tsa Lekgotla tse di sa emang sentle, badiri, mananeo ga mmogo le mabaka mangwe a a kwa ntle ga Lekgotla. Maikarabelo a go netefatsa gore seemo se se beilwe leitlho ke a bagolwane ba Lekgotla, mme bone ba begele khuduthamaga ka ga dintlha tse ba bonang di ka nna botlhabetse mo Lekgotleng tse di kwa ntle ga mmogo le tsa mo Lekgotleng.

Tshekatsheko ya dintlha tse di ka nna botlhabetse mo Lekgotleng ka bophara e dirilwe, mme dintlha tse di lemogilwe.

- **Diemo tse di Tlhobaetsang mabapi le Maranyane a Dikitso**

Lenaneo la go bona dikitso tse di neng di tshwamogile le tlhomilwe go itebaganya le bodiphatsa jwa motlhale o.

- **Diemo tse di Tlhobaetsang tsa Seriti sa Lekgotla**

Go senyega serodumo le seriti ga Lekgotla go ka bakiwa ke go leswefatswa ga leina kgotsa sekano sa Lekgotla. Seriti se se ka senngwa ke go latlhegelwa ke tshepo mo bodireding jwa BTA. Seemo se gape se ka bakiwa ke gore e re go nna le kgang go bo go sa itebaganngwe le yone. Peo leitlho ya seemo se ke maikarabelo a bagolwane ba Lekgotla. BTA e tsibogela diemo tse di ka bakang tatlhegelo ya tshepo mo Lekgotleng. Go hema diemo tse ke tiro e e dirwang ka go nna le dipuisano le ditherisano. BTA e itshetletse mo lefatsheng ka bophara jaaka lekgotla la bolaodi jo bo tsepameng. Seriti se sa BTA se lemogilwe le ke makgotla a tshwana la ITU, mme se se tshegeditswe ke dintlha di tshwana le go ikemela ka nosi. Ka ntlha ya gore BTA e dira e ikemetse ka nosi, Botswana o kgonne go ngokela bagwebi mo go tsa ditlhaeletsano go tswa kwa mafatsheng a sele ka mmetela.

Maikarabelo a go baya Bodiphatsa Leitlho

Khuduthamaga

Khuduthamaga e lemoga botlhokwa jwa maikarabelo a yone a go baya seemo sa bodiphatsa leitlho. Khuduthamaga e roletse Komiti ya Madi le go Dupa Dibuka tsa Madi maikarabelo a.

Bagolwane

Bagolwane ba makalana a Lekgotla ba tsere maikarabelo a temogo, tshekatsheko le taolo ya bodiphatsa mabapi le BTA.

Lekalana la go Dupa Dibuka tsa Madi

Lekalana la go Dupa Dibuka tsa Madi le thusa Botsamaisi mo go laoleng bodiphatsa, mme le begela khuduthamaga/Komiti ya Madi le go Dupa Dibuka tsa Madi ka selekanyo sa matsapa a peo leitlho.



TSHEKATSHEKO YA BORANYANE

Ngwaga wa madi wa 2007/2008 e ne e le o o itumedisang go BTA mo mererong ya boranyane. Lekgotla le ne la tshwanelwa ke go tsisa meamuso ya boranyane e e tlhokegang go fa badirisi ba ditlhaeletsano le maranyane a dikitso sebaka sa go akola maduo a taolo ya ga Tona ka Seetebosigo 2006. Taolo e e sega tema ya go atolosetswa pele ga mmaraka wa ditlhaeletsano mo Botswana. Go diragatsa taolo e ya ga Tona, go ne go le botlhokwa gore bagwebi ba kgone go bona meamuso jaaka matshwao a seyalemowa le dinomoro tsa megala.

Tshekatsheko ya Boranyane



Maranyane a Masha

Maranyane a masha a a neng a ntse a seo, jaaka VoIP, Wi-Fi, Wimax, jalo jalo a ne a nna teng morago ga kitsiso ya ga Tona. Ka jalo BTA e ne ya tshwanelwa ke go akaretsa boranyane jo. BTA gape e ne e tshwanelwa ke go netefatsa gore didirisiwa tsa boranyane tse di tsenang mono gae ka maikaelelo a go atolosa mmara, di sala morago ditekanyetso tsa lefatshe leno, kgaolo eno ya Aforika le tsa mafatshefatshe..

Ditshekatsheko tsa Botegeniki

Ka ponelopele ya yone, BTA mo ngwageng o o neng o feta, e ne ya simolola mananeo a a itebagantseng le go tlhama ditogamaano tsa kabo le tsamaiso ya meamuso e e sa lekaneng. Mangwe a mananeo a ke go:

- Tlhama Ditogamaano tsa Dinomoro tsa Megala go itebaganya le tsamaiso ya dinomoro tsa megala mo mmarakeng o o atolotsweng. Dingwe tsa dintlha tse di akareditsweng ke ikgethelo ya mogwebi, mekwalo e mekhutshwane, le dinomoro tsa VoIP.
- Tlhama Ditogamaano tsa Tsamaiso ya Matshwao a Seyalemowa go netefatsa gore e akaretsa dintlha tsotlhe. Tiro e e ne e akaretsa go sekaseka lenaneo la matshwao la lefatshe leno go e nyalanya le ya mafatshefatshe; go tlhama ditogamaano tsa kabo ya ditirelo tsa diromamowa go sala morago lenaneo la katoloso mmara; go tlhama ditogamaano tsa ditieseletso le ditlhwatlhwa; ga mmogo le
- Tlhama Ditselana le Mekgwa tsa Tetelelelo tse di tlhalosang tsamaiso ya go letlelela mefuta ya didirisiwa tsa ditlhaeletsano le seromamowa, tse jaana di itsegeng jaaka RTTE (Radio & Telecommunications Terminals Equipment). Tiro e e akareditse go dirwa ga Ditselana tsa Tetelelelo Mefuta ya Didirisiwa, ditlhwatlhwa tse di ka lopiwang, le tiriso ya mafelo a tlhatlhobo a a lolameng lefatshe lotlhe go lekeletsa didirisiwa go setswe morago ditekanyetso tsa BTA.

Ditshekatsheko tse di fa godimo tse di ne tsa wetswa mme tsa tlhomiwa ka ngwaga wa madi wa 2007/2008. Go tlhongwa ga tsone ke tiro e telele, mme ka jalo e tlaa tsaya dingwaga di le mmalwa. Go tshwanetswe ga elwa tlhoko gore ka mmara wa ditlhaeletsano o nna o fetoga, ditogamaano di tshwanetse tsa fetoga le one. Ditogamaano tse di dirilweng ka jalo di dira motheo o o lolameng wa isago ya mmara. Jaaka gale, ditogamaano tse di tlhamilwe go akaretswa megopolo ya ba-na-le-seabe.

Lefelo la Peo-Leitlho

Go simolodisa tiro ya Mafaratlhatlha a Tsamaiso Maranyane a Seyalomowa (ASMS) go dirile ditiragalo tse dingwe jaaka peo leitlho ya maranyane a matshwao a seromamowa. Mafaratlhatlha a a tlhoka tlhokomelo ya kgapetsakgapetsa go netefatsa gore a dira ka tshwanelo. Ka maikaelelo a go diragatsa se, BTA e ne ya aga lefelo la peo leitlho kwa Phakalane. Kago ya lefelo le e simolotse ka Motsheganong 2007 mme e tlaa wela ka Motsheganong 2008.

Ditirelo tse Dingwe

BTA e ne ya tswelera ka go dira ditiro tse dingwe tse di akaretsang go aba ga ditieseletso tsa seromamowa le dikgang tsa tlhagelelo ya matshwao. Lekgotla le ne gape la shahatsa mafaratlhatlha a lone a dikitso mme la dira Lenaneo la Tswelediso Kgwebo.



DIKGANG TSA BOLAODI JWA KGASO

BTA e filwe maikarabelo ke Molawana wa Kgaso [Cap72:04] go fa ditirelo tsa bogakolodi go Khuduthamaga ya Kgaso mo Botswana (National Broadcasting Board-NBB) mo ditirong tsa yone tsotlhe go laola ditirelo tsa kgaso mo Botswana go lebilwe dikeletso le tebelopele tsa lefatshe leno.

Dikgang tsa Bolaodi jwa Kgaso

Teseletso ya Multichoice Botswana

BTA e dirile mokwalo wa semolao o o ka dirisiwang ke ba NBB go laola ba Multichoice Botswana, morago ga gore Kgotla Kgolo ya boikuelo e athole gore NBB e diretse kwa ntle ga molao mo go tseyeng Multichoice Botswana jaaka mogasi. Pego e e tletseng ka kgang e e ka bonwa mo kgaolong ya Dikgang tsa Molao, Kobamelolele Badirisi gone mo pegong e.

Diteseletso tsa Diromamowa tsa Kgaso ya Botswana jotlhe tsa Bagwebi ba ba Ikemetseng ka nosi

BTA e ne ya thusa NBB go aba diteseletso tsa diromamowa tse di ikemetseng ka nosi, ebong Gabz Fm, Yarona FM le Duma FM. Nngwe le nngwe ya diromamowa tse e ne ya abelwa teseletso ya dingwaga tse di lesome le botlhano (15) ya kgaso mo lefatsheng leno lotlhe. Diteseletso tse di abilwe ka 4 Motsheganong 2007.

Diteseletso tsa Ditirelo tsa Kgaso tsa Sathelaete

BTA e ne ya tsamaisakabo ya teseletso ya sathelaete go mogwebi wa ditirelo tsa kgaso, ebong Munhumutape African Broadcasting Corporation (MABC) ka Morule 18, 2007.

Moikopedi yo mongwe, BESTV, o ne a palelwa ke go fitlhelela dintlha dingwe tsa kabo ya diteseletso fa e sale ka ngwaga wa 2006. Le fa go ntse jalo, NBB e tlaa tsaya tshwetso ya gore ke e abele BESTV teseletso, ka e fitlheletse dintlha tse jaanong. BTA gape e lebile boikopelo jwa teseletso go tswa go Telkom Media, e leng kompone ya kwa Aforika Borwa e e ikopelang go gasa mo Botswana.

Kitsiso ya kabo ditiro ya bokanoki jwa ditselana tsa diteseletso tsa maranyane ka go farologana e e neng ya gatsiwa ka Lwetse 2007 e ne ya tlogelwa. Baikopedi botlhe ba ba itekileng lesego ba ne ba sa fitlhelele ditsetlana tse di beilweng ke BTA.

Tetlelelo ya Thekiso ya Diabe ke ba GBC

Ka kgakololo ya Bokwaledi, NBB e ne ya dumela GBC e rekisa 49% ya diabe tsa yone go Sadibo, e bong kompone potlana ya mogasi wa Aforika Borwa etv ka Phalane 2007. Thekiso e e thusitse GBC ka madi le bodiredi jo bo rutetsweng tiro.

Teseletso e e Faphegileng

Khuduthamaga ya Kgaso mo Botswana e ne ya abela Mokgatlho wa Baopedi wa mono gae teseletso e e faphegileng go letlelela seromamowa sa kwa Aforika Borwa, Motsweding FM, go gasa ditiragalo pele ga kabo dietsele tsa mokgatlho o ka Ngwanaatsele 2007. Teseletso e e ne e le ya malatsi a a lesome le bone (14).

Fa tlase ke tshoboko ya ditirelo tsa kgaso mo Botswana. Table 1 se supa ditirelo tse di nang le diteseletso, fa Table 2 se supa ditirelo tse di senang diteseletso.

TABLE 1: DITIRELO TSE DI NANG LE DITESELETSO

STATION	SERVICE	OWNERSHIP	REACH
Radio Botswana	Radio	Government	National
Yarona FM	Radio	Private	National
Gabz FM	Radio	Private	National
Duma FM	Radio	Private	National
GBC	TV	Private	National
MABC	TV	Private	National

TABLE 2: DITIRELO TSE DI SENANG DITESELETSO

STATION	OWNERSHIP	SERVICE	REACH
Multichoice Africa	Foreign Private	TV	National
BTV	Government	TV	National
VOA	Foreign Government	Radio	National
RB2	Botswana Government	Radio	National
GTV	Foreign Private	TV	National

Dikgang tsa Bolaodi jwa Kgaso (tswelediso)

Lenaneo la Phuduso ya Dikitso

NBB e sedimoseditse Tona wa Lephata la Ditlhaeletsano, Maranyane le Boitseanape ka letlhoko la go tlabolola lenaneo la go tsamaisa khudugo ya maranyane a digital kwa phuthegong ka Morule 2007. Go solofelwa fa BTA e tlaa tsaya ketapele mo tirong e.

Setlhopha sa tlhokomelo phuduso e se ne sa tlhophiwa ka Tlhakole 2008, mme Dr. M. A. Mpotokwane, yo e leng Modulasetilo wa Khuduthamaga ya Kgaso mo Botswana ke ene Modulasetilo wa sone. Setlhopha se se kopilwe go nna mogakolodi wa ga Tona wa Lephata mo go tlameng lenaneo la phudugo. Setlhopha se simolotse ka go fa Tona meono e e akaretsang go tlhongwa ga setlhopha se se tlaa bong se tshwere tiro, le melawana e e tla bong e kaela setlhopha se. Megopolo e e neetswe Tona ka Tlhakole 13, 2008.

Peo Leitlho ya Ditiragalo tsa Kgaso

BTA e baya leitlho ditirelo tsa kgaso tsa diromamowa tse di abetsweng diteseletso tsa kgaso (GBC, Radio Botswana, Yarona FM, Gabz FM le Duma FM). Mo makgethong a mangwe go reediwa kgaso ya diromamowa le thelebishini go thola gore a melwana ya diteseletso e salwa morago. Mo gongwe go tsewa maeto go ya kwa mafelong a bagasi ba go bona gore ba dira jang mo go tsa letsatsi le letsatsi, le go ba thusa fa go tlhokegang teng mo go tsa diteseletso.

Mo ngwageng o, BTA ga e a amogela dingongorego dipe mabapi le kgaso. BTA gape ga e a lemoga tlolo melao ya diteseletso epe ke bagasi mo kgasong ya bone.

Botsaya Karolo mo Diphuthegong tsa Mafatshefatshe NBB e tsaya karolo mo diphuthegong tsa mafatshefatshe tse go tsewang ditshwetso tsa popotla tsa go tlabolola mhama wa ditlhaeletsano kwa go tsone. Dingwe tsa diphuthego tse BTA e di tseletseng le NBB mono-ngwaga ke:

- African Communications Regulatory Authorities Network (ACRAN) , e tshwaretswe kwa Ouagadougou, Burkina Faso, Seetebosigo 2007
- Broadcast Asia Conference, Singapore, 19 – 22 Seetebosigo 2007

- Southern African Broadcasting Association (SABA) 15th Annual General Assembly held in Windhoek, Namibia, 21 – 24 Phalane 2007
- International Institute of Communications (IIC) 38th Annual Conference and Forum held in London, UK, 20 -23 Phalane 2007
- Digital broadcasting Conference on Digital Broadcasting: e tshwaretswe kwa Gauteng, Aforika Borwa, 29 Ferikgong – 01 Tlhakole 2008.
- Commonwealth Broadcasting Association (CBA) 27th General Conference e tshwaretswe kwa Nassau, Bahamas, 23 – 26 Ferikgong 2008
- Dithuto-puisano tsa CRASA, tse di neng di itebagantse le go tlhaloganya maemo a mafatshe a SADC a leng mo go one mo go diragatseng nyalano ya maranyane mo ditlhaeletsanong. Phuthego e e ne e tshwaretswe kwa Gauteng, Aforika Borwa ka 25 – 28 Seetebosigo, 2008.

Diphuthego tsa NBB

Ka Motsheganong 2007, BTA e ne ya lomaganya bokopano jwa NBB jo bo neng bo tshwaretswe kwa Kang. Maikaelelo a bokopano jo e ne e le go sekaseka Lenaneo la go Dira la NBB la ngwaga tsa 2005 – 2009. Tshekatsheko e e ne e dirwa go beilwe leitlho diphetogo tse di diragatseng fa e sale Khuduthamaga e e tlhomiwa.

Tsamaiso ya NBB

BTA e tswelela ka go tsaya karolo e kgolo mo tsamaisong ya ditirelo tsa NBB. Lekgotla le itsise setšhaba ka ditirelo tsa NBB ka metlhale e e farologanyeng, mme gape le ntshetsa NBB lenaneo la tiriso madi. BTA gape ke mmaditsela





TSHEKATSHEKO YA TLHABOLOLO YA MMARAKA

Tsenelelo ya ditlhaeletsano mo mmarakeng

Mmaraka wa ditlhaeletsano o tsweletse ka go itemogela kgolo e e bonalang mabapi le palo ya badirisi ba ditirelo tsa ditlhaeletsano, segolo jang tsa disele.

Tshekatsheko ya Tlhabololo ya Mmaraka

Tsenelelo ya ditlhaeletsano mo mmarakeng

Mo tsamaong ya dingwaga, megala ya disele e ne ya ntsifala fa megala ya sennelaruri yone e ne e sa supe kgolo epe. Figure 1 se se fa tlase se supa kgolo ya badirisi ba megala ya sennelaruri fa e tshwantshangwa le badirisi ba megala ya disele mo dingwageng tse di fetileng.

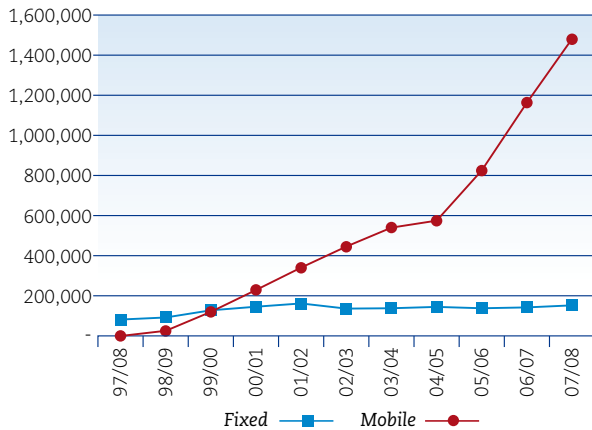
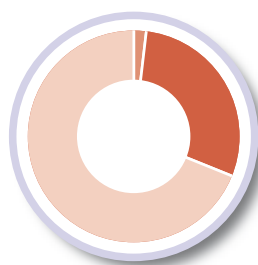


Figure 1: Kgolo ya badirisi ba megala ka ngwaga (March end)

Megala ya sennelaruri

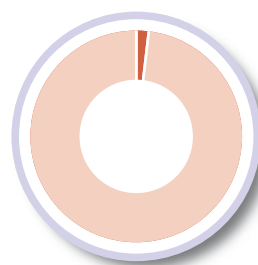
Megala ya sennelaruri e bonye kgolo e nnye. Palo yotlhe ya badirisi e oketsegile go tswa kwa go 136 946 ka Mopitlo 2007 go ya kwa go 142 282 Mopitlo 2008, e le kgolo ya bone go tswa mo lekgolong (4%). Le fa go ntse jalo, bokete ja go atologa ga megala go ntse go le fa go 8% jaaka mo dingwageng tse di fetileng. Mo mmarakeng wa megala ya sennelaruri, megala e e duelelwang morago ga tiriso e di goga kwa pele, jaaka ka bofelo jwa Mopitlo 2008, go ne go na le badirisi ba ba duetseng morago ga tiriso ba le 97 922, e le selekanyo sa 69% ya badirisi botlhe fa go tshwantshangwa le badirisi ba le 41 219 ba ba duelang pele ga tiriso, ba emetse 29% ya badirisi botlhe mo mmarakeng. Megala ya setshaba ke yone e kwa tlase ka lefatshe leno lotlhe, ka e emetse bobedi mo lekgolong (2%) ya megala ya sennelaruri mo mmarakeng. Figure 2 se supa diperesente tsa diabe tsa megala ya sennelaruri mo mmarakeng.

Figure 2: Diperesente tsa badirisi ba megala ya letheke (e e duelang pele ga tiriso, le e e duelang morago ga tiriso)



Prepaid - 29%
Postpaid - 69%
Payphones - 2%

Figure 3: Diperesente tsa megala ya letheke ya badirisi ba ba duelang morago ga tiriso le ba ba duelang pele ga tiriso



Contract - 2%
Postpaid - 98%

Megala ya disele

Megala ya disele e bonye kgolo mo mmarakeng go tswa kwa go 1 151 761 ka Mopitlo 2007 go ya kwa go 1 485 791 ka Mopitlo 2008. Kgolo e ke selekanyo sa masome a mabedi le borobabongwe mo lekgolong (29%) fa go tshwantshangwa le le 40% yo o begilweng ngogola nako yone e. Badirisi ba ba duelang pele ga tiriso ba ntse ba di goga kwa pele mo mmarakeng wa disele, jaaka ka Mopitlo 2007 badirisi ba ba duelang pele ba ne ba tshwere 97% ya diabe mo mmarakeng fa go tshwantshangwa le 98% ka Mopitlo 2008, kgolo e le 1% magareng ga dipaka tse pedi tse. Se se supa ke Figure 3 fa tlase.

Go ntsha diteseletso

Morago ga go atolosa mmara ka ditlhaeletsano o o neng o tlhoka gore go dirwe thulaganyo e ntsha ya diteseletso ka 2006/7, thulaganyo ya mmara ka ditlhaeletsano o ne wa tsaya phekelo e sele mo ngwageng wa madi wa 2007/8. Teseletso e e bulegileng e e bidiwang Teseletso ya Bagwebi ba Ditlhaeletsano mo Setshabeng (Public Telecommunications Operators (PTO)) e ne ya tlhomiwa mme morago ya abelwa Koporase ya Ditlhaeletsano ya Botswana (Botswana Telecommunications Corporation -BTC) ka Mopitlo 2007 le Orange Botswana le Mascom Wireless ka Moranang le Seetebosigo 2008 ka go latelana ga tsone.

Ka fa tlase ga lenaneo le lesa la go ntsha diteseletso, tseletso ya mogwebi wa ditirelo tsa dikitso le inthanete di ne tsa kopanngwa go dira tseletso e le nngwe ya maranyane a Ditirelo tsa Mafaratlhatlha a Boleng jo bo Okaditsweng (Value Added Network Services - VANS). Teseletso e ya VANS e ne ya fiwa bagwebi ba VANS ba le masome a mabedi le bone (24), go simolola ka 13 Seetebosigo 2007 go ya go 31 Moranang 2008. Mo go ba ba masome mabedi le bone (24) ba ba filweng diteseletso, ba le lesome le boraro (13) ba ne ba fetola go tswa kwa go tsa bagwebi ba ditirelo tsa inthanete (ISP)/ diteseletso tsa dikitso, fa ba le lesome le motso (11) e ne e le baikopedi ba ba basha. Botlhe ba ba nang le diteseletso tsa ISP/dikitso go solofelwa gore ba bo ba di fetoletse kwa go tsa VANS mo ngwageng o o tlang wa madi.

Le fa go ntse jalo, tseletso ya mafaratlhatlha a ditlhaeletsano e e ikemetseng ka nosi ga e a amega mo diphetogong tse disha tse. Palo ya diteseletso mo lekgamung le e oketsegile ka borataro fela mo ngwageng o o fetileng wa madi. Dipalo tse go buiwang ka tsone fa godimo di supa ke Figure 4.

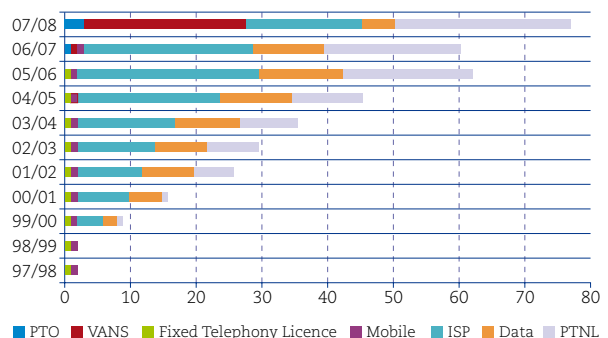


Figure 4: Dipalo tsa mofuta e e farologanyeng ya diteseletso

Tshekatsheko ya Tlhabololo ya Mmaraka (tswelediso)



BTA e abela Botswana Telecommunications Corporation (BTC), Orange Botswana (Pty) Ltd and Mascom Wireless (Pty) Ltd ditseletso tse disha tsa ditlhaeletsano

Ditlhabololo mo mmarakeng morago ga katoloso

Ditlhabololo tse di bonalang tse di diragetseng di akaretsa go tlhomiwa ga dikgoro tsa maranyane a tiriso-lentswe tsa mafatshefatshe ke di PTO, segolo jang Mascom Wireless Botswana le Orange Botswana. Mo thulaganyong ya pele e mo go yone ditseletso tsa megala ya sennelaruri le ya disele di neng di farologanye, bagwebi ba disele ba ne ba filwe marapo ke tseletso go ntsha megala ya bone ya mafatshefatshe ka dikgoro tsa BTC. Thulaganyo e ntsha ya tseletso ya PTO e tlosolotse seemo seo, mme e letlelela bagwebi botlhe go ipulela dikgoro. E seng jaaka pele, tseletso e ntsha ya VANS e e nayang bagwebi ba VANS go ntsha ditirelo ka go farologana go akarediwa le maranyane a megala a inthanete a lefatshe leno le mafatshe a mangwe (VoIP), e simolotse go ntsha maduo. Go setse go na le bagwebi ba le mmalwa ba VoIP ba ba ntshang ditirelo tsa mafatshefatshe tsa go letsa. Go solofelwa fa metlhale e mesha e ya ditirelo tsa go leletsa kwa ntle e tla fokotsa dituelo tsa go leletsa kwa ntle ga lefatshe leno.

Dipoelo tsa madi tsa lekgotla

Fa go akarediwa, mebaraka ya megala ya disele le ya sennelaruri e nnile le pelo e e siameng mo dingwageng tse pedi tse di fetileng ka go supa dipoelo tse di kwa godimo.

Fa go itebaganngwa le disele, madi a godile go tswa kwa go didikadike tse P1.1 yo o begilweng ka bofelo ja ngwaga wa madi wa 2006 go ya kwa go dibillion tse P1.4 kwa bofelong ja Morule 2007. Dipoelo tsa mmaraka wa disele di oketsegile fela thata go tswa kwa go didikadike tse P315 ka Morule 2006 go ya kwa go didikadike tse P433 ka Morule 2007. Bagwebi ba disele ba tswela ba beeletsa mo lekgotleng jaaka go supiwa ke kgolo ya boleng jwa dikhumo go tswa kwa go didikadike tse P988 ka Morule 2006 go ya kwa go dibillion tse P1.1 ka Morule 2007. Figure 5 se se fa tlase se supa ka fa mmaraka wa disele o dirileng ka teng mo tsamaong ya dingwaga.

Ditirelo tsa megala ya sennelaruri di dirile madi a a ka tshwarang didikadike tse P803 ka bofelo ja Mopitlo 2007, mme dipoelo tsothle ya nna didikadike tse P117 mo nakong eo. Dikhumo tsone tsa dira dibillion tse P1.6. Figure 6 fa tlase se supa dipoelo tsa madi a megala ya sennelaruri mo tsamaong ya dingwaga.

Figure 5: Kgolo ya dipoelo tsa mmaraka wa disele mo dingwageng (December end)

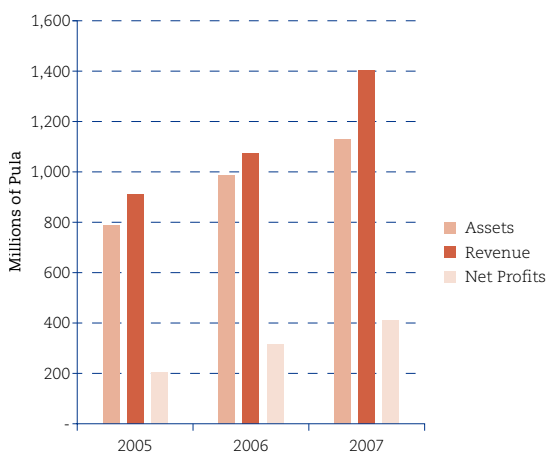
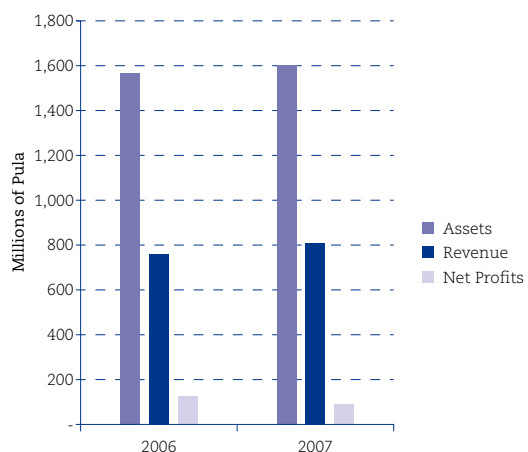


Figure 6: Kgolo ya dipoelo tsa mmaraka wa megala ya sennela ruri (March end)



Megala ya sennelaruri e bonye kgolo e nnye. Palo yotlhe ya badirisi e oketsegile go tswa kwa go 136 946 ka Mopitlo 2007 go ya kwa go 142 282 Mopitlo 2008, e le kgolo ya bone go tswa mo lekgolong (4%).

DIKGANG TSA MOLAO, KOBAMELO LE BADIRISI

Peo leitlho

Nngwe ya maikarabelo a BTA ke go netefatsa fa go na le ditirelo tsa ditlhaeletsano tse di motia ebile di ikanyega mo Botswana. Ka jalo, e tshwanetse go netefatsa gore ba ba amegang ba a laolesega ka go sala morago thulaganyo ya bolaodi jwa ditirelo tsa ditlhaeletsano ka go etapele le go baya leitlho gore ditirelo tse di ntshiwang ke tsa tlhwatlhwa.

Dikgang tsa molao, Kobamelo le badirisi

Go diragatsa taolo e, bagwebi ba ne ba laolwa go ntsha dipego tsa gore kgwebo e tsamaya jang kgwedi le kgwedi. Dipego tse di tshwanetse go supa ka botlalo seemo le bokgoni jwa mafaratlhatlha mabapi le maikaelelo a a beilweng a bodiredi jwa tlhwatlhwa jaaka a tlhomiwa ke bolaodi mo nakong e e rileng. Dipego di baya mo pontsheng bokgoni jwa mafaratlhatlha a bagwebi go beilwe mo tekanyetsong le boleng tsa bodiredi jaaka di nankotswe mo ditsetlaneng tsa teseletso.

Le fa mafaratlhatlha a dirile sentle mo ngwageng otlhe, BTA e lemogile gore mathata a bosheng a koporasi ya Botswana ya motlakase (BPC) a go laola tiriso ya motlakase ka go o kabakanya go amile bokgoni jwa mafaratlhatlha mo go sa siamang segolo jang ka kgwedi ya Tlhakole. Kwa ntle ga go itlhokomolosa seo, bagwebi ba ne ba laolesega sentle. Fa go neng go sena taolesego, dipuisano mo diphuthengong di ne di thusa ka go ne go supafala fa go buisana matlho a phage a lebane go ne go tlosa dikgoreletsi tsa go buisana ka mokwalo.

Go sala molao morago

Mo maitekong a BTA a go netefatsa gore badirisi ba diromamowa ba sala molao morago, BTA e ne ya sala morago badirisi ba ba neng ba sa shafatsa ditesi tsa bone tsa seromamowa, mme ga lemosega fa ba le 353 ba sa sala molao morago ka Mopitlo 31, 2008. Mo palong e yotlhe, ba le 69 ba ne ba tla fa ngwaga o fela go tla go shafatsa ditesi tsa bone, fa 24 go padile gore ba bonwe, fa ba ba setseng ba santse ba tlhotlhomisiwa. Tiro e tlaa tswelela mo ngwageng wa madi o o tlang go netefatsa gore badirisi ba diromamowa ba sala morago ditsetlana tsa Molao wa Ditlhaeletsano.

Ditlhotlhomiso

BTA e ne ya dira ditlhotlhomiso ka bagwebi mo Botswana tebang le tiriso ya didirisiwa tsa ditlhaeletsano tse di seng ka fa molaong mo ngwageng wa madi wa 2007/2008. Maikaelelo a ditlhotlhomiso tse e ne e le:

- Go batlisisa selekanyo sa tiriso e e seng ka fa molaong mo mmarakeng wa ditlhaeletsano; le
- Go ruta badirisi ba ba seng ka fa molaong ka dithulaganyo tsa go ntsha ditesi tse le go ba gakolola go kopa ditesi tse.

Dikompone tse go neng go lemogilwe di kile tsa tlola molao, di ne tsa salwa morago go netefatsa gore di dira ka fa tshwanelong. Mo nakong ya pego e, ditlhotlhomiso di ne tsa dirwa mo mafelong a Gaborone, Francistown, Selibe Phikwe, Serowe, Orapa, Letlhakane le Kanye. Dikompone di le masome a mane le boraro (43) di ne tsa etelwa jaaka go supafala mo Table 3 e e fa tlase:

Mo dikomponeng tse di masome a mane le boraro tse di neng tsa etelwa, tse pedi di ne di sa tlhokane le teseletso ya ditlhaeletsano. Dikompone di ferabobedi di ne di na le ditesi tsa BTA mme tse di masome a mararo le boraro di ne di dira di sena ditesi tse, ke gore mo eseng ka fa molaong. Go supagala koketsego mo dipalong tsa ditirelo tse di seng ka fa molaong jaaka go supagala mo dipalong tse di fa godimo. Tiragalo e e a tshwenya ka e raya gore go lepalepanngwe ditlhotlhomiso le go ruta setshaba.

Ngwaga wa madi wa 2007/2008 o ne gape wa nna le ditlhotlhomiso tse di tseneletseng le go latedisa mo mafelong a a jaaka francistown, Selibe Phikwe, le Serowe kwa go neng ga lemogwa gape badirisi ba ba seng ka fa molaong. Le fa go ntse jalo, dilo di ne tsa baakanngwa mme bontsi jwa dikompone tsa simolola go duela dikoloto le go kopa ditesi tse di ntsha.

Table 3: Dikompone tse di etetsweng fa go dirwa ditlhotlhomiso

AREA	NUMBER OF COMPANIES	LICENSED OPERATORS	ILLEGAL OPERATORS	DID NOT NEED BTA LICENCE
Broadhurst (KBL)	1	0	1	0
Francistown	17	4	11	2
Selibe Phikwe	6	4	2	0
Serowe	9	0	9	0
Orapa	4	0	4	0
Letlhakane	5	0	5	0
Kanye	1	0	1	0
TOTAL	43	8	33	2

Dikgang tsa molao, Kobamelo le badirisi (tswelediso)

Thuto-seka-dipuisano ya go gakololana ka maitsholo a a lolameng le go ntsha ditirelo tsa tlhwatlhwa

Lekgola la BTA le ne la tshwara thuto-seka-dipuisano ya bogakolodi e e neng e bua ka Maitsholo a Bagwebi le Thulaganyo ya Melawana ya Ditirelo tse di Tlhwatlhwa, e maikaelelo magolo a yone e neng e le go neela bagwebi le badirisi sebaka sa go nna le seabe mo melawaneng ya maitsholo a bagwebi le ditirelo tse di tlhwatlhwa, tse di tla felelang e le melawana.

Melawana e e ne ya ratwa ke boraro jo bo neng bo amega, e leng Lekgotla la Bolaodi jwa Ditlhaeletsano mo Botswana (BTA), bagwebi le badirisi. BTA yone e ne e leka go lekalekana dikeletso tsa bagwebi le tsa badirisi.

Fa go ne go buisanngwa ka boleng jwa ditirelo (Quality of Service – QoS), matshego a QoS ebong, bofefo, go itaya kgomo lenaka, go tshephega, go letlelela diphetogo, go nna teng, go ntsha maduo, go direla dilo mo pepeneneng le go sa kgetholola ope a ne a supywa a le botlhokwa mo go ntsheng ditirelo tsa boleng jo bo kwa godimo.

Go tlhabolola didirisiwa tse pedi tsa maitsholo le ditirelo go tsewa e le maiteko a go tokafatsa taolo mo bodireding le go tsisa kutlwisisano magareng ga bobedi ja bana-le-seabe ba ba botlhokwa, e bong ba ba ntshang ditirelo le badirisi.

Go dupiwa ga dibuka tsa madi tebang le dithulaganyo tsa peo ya ditlhwatlhwa

BTA e ne ya thapa komponi ya ICT Consultants (PTY) Ltd go sekaseka le go dupa dithulaganyo tsa dituelo tsa bagwebi ba disele le megala ya sennelaruri mo Botswana. Tiro e e ne e simolola tiro e kgolo ya QoS e BTA e batlang go e dira mo nakong e e tlang. Le fa tiro e kgolo ya QoS e tlaa itebaganya le tlhabololo ya ditselana tsa go baya leitlho QoS, go dupa dithulaganyo tsa dituelo gone go itebaganya le go kala le go lekanyetsa QoS tebang le dithulaganyo tsa dituelo go sekaseka gore a ditlhwatlhwa tse di laotsweng di tsenngwa mo tirisong jaaka go dumelanwe, go sa bewa modirisi ka fa mosing.

Ka thulaganyo e, BTA jaaka molaodi wa ditlhaeletsano, e ne ya bona tsela ya go tsamaisa thulaganyo ya go tlhoma lenaneo la ditlhwatlhwa. Bagwebi le bone ba ne ba boelwa ka go lemoga ditsetla tse di tebang le ditsamaiso tsa go sekaseka peo ditlhwatlhwa ya bagwebi le ka fa e amang badirisi ka teng. Tiro e gape e ne ya alela phate ditshekatsheeko tse di tlaa dirwang mo isagong le ditiro tse dingwe tse BTA e ka di dirang jaaka bontlha bongwe jwa go baya leitlho dithulaganyo tsa QoS tsa mogwebi.

DIKGANG TSA BADIRISI

Dingongorego

Morago ga go feleletsa dithulaganyo tsothe tsa ditlhaeletsano/puisano le montshi wa ditirelo (mogwebi), badirisi ba na le tshwanelo ya go pega dingongorego kwa BTA. Fela jalo, bagwebi le bone ba ka kopa go tsheregannngwa kwa BTA fa go na le dikgang tse ba palelwang ke go di fetsa.

Dingongorego di ferabongwe di ne tsa pegwa kwa BTA mo nakong ya pego e. Diferabobedi tsa dingongorego tse di feditswe fa e le nngwe e santse e sekwasekwa ke Bolaodi. Go ne go na le dingongorego di dintsu kgathanong le BTC go na le bagwebi ba bangwe. Dingongorego di supa di ne di dirilwe kgathanong le BTC fa ele nngwe e ne e le kgathanong le di PTO tse tharo (BTC, Mascom le Orange). Gape go ne go na le ngongorego e le nngwe tebang le mogwebi wa ditirelo tsa enthanete (Internet Service Provider – VANS) le e le nngwe go tswa mo mothong mongwe yo o neng a sa tlhaloganye tseletso ya mogwebi wa seromamowa.

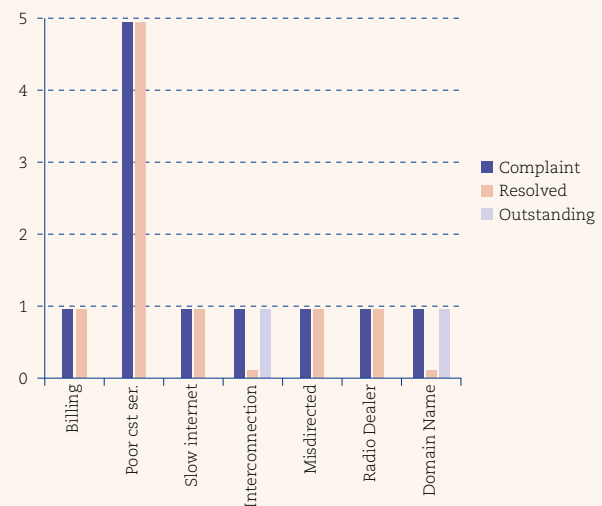


Figure 7 fa tlase se supa mefuta ya dingongorego e e kwadisitsweng kgathanong le bagwebi mo ngwageng o o sekwasekwang

Go nnile le phokotsego e e bonalang ya dingongorego tse di isitsweng kwa bolaoding mo ngwageng ono fa go tshwantshannngwa le mo dingwageng tse pedi tse di fetileng.

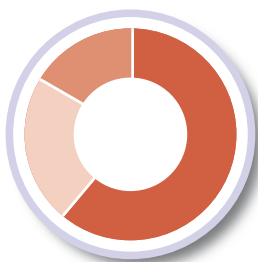


BTA e tshwere phuthego go sekaseka ditsetla tsa maitsholo tsa bogwebi, le ditselana tsa boleng jwa ditirelo

Thuto

BTA gangwe le gape e dira ditiro tsa go ruta setshaba. Maikaelelo a maeto a e ne e le go ruta baeteledipele ba setshaba, bana ba dikole le setshaba ka kakaretso, ka dintlha di le mmalwa tse di itebagantseng le maikarabelo a BTA, jaaka dikgwetlho le go fenywa mo go lepanyeng Bolaodi, go utlwa gore badirisi ba reng ka tse di ba amang kgotsa dingongorego tsa go fa bagwebi ditseletso, tsamaiso ya maranyane a matshwao, go baya melawana ya ditlhwatlhwa, go baya boleng ja madirelo le go netefatsa gore bagwebi ba sala morago melawana ya ditseletso.

Mo nakong ya pego e, ditiro tsa go ya kwa setshabeng di ne tsa dirwa mo dikgaolong tsa dikhansela di le some, Ntlo ya dikgosi, madirelo a thuto a le mararo le ditshupo di le nne. Fa go sobokwa, madirelo a ferabobedi a ne a buisiwa a a emetsweng ke:



- Dikhansela le Ntlo ya Dikgosi, 61.11%
- Ditshupo 22.22%
- Mafelo a thuto, 16.67%

Figure 8: Maiteko a a tserweng ke Lekgotla go ruta sechaba mo ngwageng wa 2007

Le fa BTA e tsere matsapa a go ruta setshaba le go kgaogana le bone dikgang, tshekatsheko ya itemogelo ya badirisi e e dirilweng mo ngwageng wa madi e supa fa setshaba se tlhloganya go le go nnye ka BTA.

Maduo a a kwa tlase a ke sesupo sa gore go tlhokega go lebisisa gape methale e e dirisitsweng le ba go lebagantsweng dithuto le bone. Le fa go ntse jalo, maduo a a kwa tlase a ga a reye gore bodiredi jwa BTA bo a palelwa, fela go raya gore botsipa jo bo neng bo dirisitswe ja gore dikgang di tla jwelelela ka ditlhopho tse tharo tse, ga bo a tsisa maduo a a solofetsweng.

Tshekatsheko ya patlo megopolo ya ba-na-le-seabe

BTA e ne ya dira tshekatsheko go batlisisa megopolo mo go ba ba amegang mo ngwageng one o, maikaelelo a yone e le go:

- Tlhaloganya ka botlalo modirisi le mogwebi mo seemong se Lekgotla le direlang mo go sone:
- Lemoga ditsholofelo, mananeo le ditebo tsa ba-na-le-seabe mabapi le BTA;
- Tshwantshanya megopolo ya jaanong e e ntshitsweng ke badirisi le bagwebi le e e kileng ya ntshiwa mo dipatlisisong tsa BTA tse di fetileng; le go
- Kala ka bophara seriti le bodiredi jwa BTA jaaka di lebelelwa ke badirisi le bagwebi mo madirelong.

Go ya ka bagwebi, BTA e lebege e na le seriti se se kwa godimo tebang le ditirelo tsa yone, boitshwaro le boeteledipele. Le fa go ntse jalo, dikgalo tse bagwebi ba di ntshitseng tebang le go ntsha maduo ga BTA ke tsa go ntsha ditirelo.

Go tswa mo badirising, BTA ga e itsege. Ga se bontsi jo bo itseng ka Bolaodi, le go tlhloganya mo e seng ga sepe ga didirisiwa le ditirelo tse e ka di fang modirisi.

TSA SEMOLAO

Dikgotlhang

Bolaodi bo ne jwa nna le ditsheko tse di kwadilweng fa tlase, tse di neng tsa begwa mo ngwageng o o fetileng mme tsa isiwa kwa makgotleng a magolwane a ditsheko mo nakong ya pego eno.

Tsheko magareng ga Orange Botswana (Pty) Ltd le Lekgotla la Bolaodi jwa Ditlhaeletsano mo Botswana MAHLB-000246-06

Tsheko e e simolotse ka 2005, mme e ne e le ka gore dipoelo tsa Orange Botswana (Pty) Ltd di balwe jang go lebilwe ditsetlana tsa teseletso ya kompone e jaaka Mogwebi wa Ditirelo tsa Ditlhaeletsano tsa Setshaba. Kgotla Kgolo e ne ya ntsha katlholo ka Tlhakole 2007fa e neng ya lemoga gore:

- a) Madi a mahala a Orange Botswana e a fang badirisi ba yone ke madi a ba a dirileng jalo he a tshwanetse go balelwa mo mading a dipoelo tsa bone; le
- b) Mo potsong ya gore a madi a a dirang dikarata tsa kgobola-kgobola a tshwanetse go ntshiwa fa go balwa dipoelo tsotlhe. Kgotla Kgolo e ne ya re madi a a dirisiwang go dira dikarata tseo a tsamaelana le ditshenyegelo tsa thekiso ya madi a a dirisiwang mo mogaleng (units), ka jalo ga a ka ke a kgaphelwa ntle ka ga a ka ke a tsewa jaaka "thekiso e e kwa tlhoko".

Orange Botswana (Pty) Ltd e ne ya ikuela kgathanong le tshwetso ya tlhaloso ya dipoelo tsotlhe ya Kgotla Kgolo. Orange Botswana e ne ya fenywa kwa Kgotleng ya Boikuelo ka Phatwe 2007. Kgotla ya Boikuelo e ne ya fetsa ka gore:

- i) Madi a go letsa mahala a moikuedi a a fang badirisi ga a tsenngwe mo dibukeng tsa madi gape ga a boele mong wa teseletso mo go direng tshoboko ya dipoelo; le
- ii) Ditshenyegelo tse di dirisiwang mo dikarateng tsa kgobola kgobola ga di ka ke tsa ntshiwa mo tshobokong ya dipoelo.

Orange Botswana e dirile kopo ya go busediwa madi a yone kgotsa go dirisiwa e le lekgetho la madi a go tweng a duetse BTA ka phoso, mme kang e e santse e sekasekwa.

Tsheko magareng ga Lekgotla la Makgetho mo Botswana (BURS) le Lekgotla la Bolaodi jwa Ditlhaeletsano la Misca 327/2005

Lekgotla la Bolaodi jwa Ditlhaeletsano mo Botswana (BTA) le ne le na le tumalano ya dithekiso le kompone ya TCI International, e mo go yone TCI International e neng e tshwanetse go tsisa didirisiwa tsa tsamaiso ya maranyane a seyalemoya (Automated Spectrum Management System) [ASMS]. TCI International e ne e tshwanetse gape go ntsha bakanoki ba ba tlaa tsamaisang tiro ya BTA. Tumalano ya madi a a ka tshwarang didikadike di ferabobedi tsa ledi la Amerika (US\$8m) a ne a kgaogannwa ka mogato wa tiro, e e neng e tla dirwa mo magatong a a kgaoganyeng. Tshekatsheko ya lekgetho e ne ya dirwa ya ba ya pegwa BTA go lebeletswe madi a tumalano. BTA e ne ya ngongoregela tshekatsheko e ka mabaka a gore lekgetho le le tshwanetseng go duelwa e nne le le itebagantseng le tiro ya bokanoki e seng la go reka le go tlhoma didirisiwa.

Ka tumalano magareng ga makgamu oo mabedi, Kgotla Kgolo e ne ya laola ka Ngwanatsele 2006 gore lekgetho le le sekwasekwang le isiwe kwa go ba BURS go lebisisiwa. Go ne ga dumelwana gape gore pego ya lekgetho leo e ntshe bosupi jwa dituelo tsotlhe tse di dirilweng. Kgotla gape e ne e laotse gore fa kang e ka pala go rarabololwa, lekgamu lengwe la oo mabedi le na le tshwanelo ya go pega kang gape.

Dipuisano di santse di tswelletse magareng ga bobedi jo gore bontlha jo bo tshwanetseng go kgethisiwa ke bofe mo tumalanong ya BTA le TCI International.

Kgang magareng ga Multichoice (Botswana) Pty Ltd le Khuduthamaga ya Kgaso mo Botswana (National Broadcasting Board (NBB)-Civil Appeal) 022/07

Kgang magareng ga NBB le Multichoice (Botswana) Pty Ltd e tsositswe ke go tlhalosa molao wa kgaso wa Cap 72:04. BTA e gogetswe mo puong e ka e le yone mokwaledi le mogakolodi wa NBB.

Kgang e simologile ka 2004 fa Multichoice Botswana e ikuela kwa Kgotla Kgolo go sekaseka go ntshiwa ga teseletso ke NBB e e neng e e fa Multichoice Botswana. Kgang e ne e le gore a tiro ya Multichoice Botswana ke ya boanamisi. Kgotla Kgolo ya araba potso ka go ganetsa, e lemoga fa Multichoice e sa dire tiro ya moanamisi jaaka go tlhalosega mo molaong o NBB e o dirisitseng go ntsha teseletso.

NBB e ne ya fitisetsa kgang kwa Kgotleng ya Boikuelo tebang le tshwetso ya Kgotla Kgolo. Potsa kgotsa kgang ya moruthutha e ne e le gore Kgotla ya Boikuelo e tihalose gore a Multichoice Botswana e mo kgwebong ya boanamisi kgotsa ke moanamisi. Kgotla ya nna ka fa letlhakoreng la Multichoice Botswana ka go swetsa gore ditiro tsa Multichoice Botswana ga di kake tsa tihalosiwa e le tsa bogasi fa go lebelelwa molao wa bogasi.

Boikuelo jwa kompone ya Long (Pty) Ltd.

E ke kgetsi e mo go yone mong wa Long (Pty) Ltd a neng a bonwa molato ke lekgotla la ga mmakaseterata mabapi le go nna le ditirelo tsa ditlhaeletsano e seng ka fa molaong a roba molao wa bo masome a mabedi le bosupa, molana wa ntlha (section 27 (1)) wa ditlhaeletsano le go nna le didirisiwa tsa dipuisano tsa seromamoya kwa ntle le tsesetso kgathanong le molao wa bo masome a mane le bobedi molana wa ntlha (section 42 (1)) e ntse e le mo molaong o o fa godimo. Go bonwa molato le go atholwa go dirilwe ka kgwedi ya Phukwi 2006 mme kompone ya isa kgetse kwa Kgotla Kgolo.

Tatediso go Bosekisi jwa Setshaba (Directorate of Public Prosecutions – (DPP)) e dirilwe ka Motsheganong 2007 go tlhomamisa gore boikuelo bo feletse kae. Mme boikuelo bo sa ntse bo tlaa reediwa ke Kgotla Kgolo, le fa e le mafelong a Mopitlo 2008.

DIPUISANO LE DIKGANG TSA GO DIRISANA LE SETSHABA

Letsatsi la Mafatshefatshe la Dikitso: 2007

BTA e ne ya tsaya karolo mo ipelelong Letsatsi la Mafatshefatshe la Dikitso la 2007 (World Telecommunication and Information Society Day-WTISD). Moletlo o o ne o tshwaretse kwa motseng wa Rakops mo kgaolo potlana ya Boteti, ka Motsheganong 17, 2007.

Moletlo o e ne e le lantlha o tshwarwa ka setlhogo se sesha sa WTISD, morago ga phetolo leina ke batsena phuthego ya Lekgotla la Mafatshefatshe la Ditlhaeletsano (ITU) ka Ngwanaatsele 2006 kwa Antalya, Turkey. Moletlo o ne o akaretsa metse e e mabapi, e tshwana Kedia, Mmadikola, Mopipi, Toromoja, Xere le Xhumo.

Dipuisano le Dikgang tsa go Dirisana le Setšhaba



BTA e thusitse baeteledipele ba Kgotla-kgolo tsa buikuelo tsa makgotla a Setswana ka dikomputara; e agetse motlhoki ntle ko Pitsane, gape e itshwaragantse le diphuthego tsa makgotla a mafatshe-fatshe a ditlhaeletsano jaaka Global Symposium for Regulators e e neng e tshwaretswe ko Pattaya, Thailand

Moono wa boipelo jwa letsatsi le e ne e le "Go lomaganya banana: Ditshono tsa ICT". Moono o o ne o supa fa banana e le bone ba ka rotloetsang maranyane a dikitso le ditlhaeletsano (ICT), le gore ke bone ba ka agang setšhaba sa dikitso.

Metse yotlhe e e neng e tsaya karolo mo moletlong wa letsatsi le e ne ya gokelwa maranyane a ditlhaeletsano go tsisa ditirelo tse mo setšhabeng sa metse e di tshwana inthanete go dirisiwa mo dikolong, kgwebong le matshelo a selegae go dirisiwa maranyane a VSAT. BTA e ne ya ntsha dimpho tsa metshine e e dirang meriti e le mene (4) go dirisiwa mo mafeleng a maranyane kwa Mopipi, Rakops, Xere le Xhumo. Metshine e e lopile madi a a kanang ka P55 338. 80.

Dikabelo

Lekgotla la Bolaodi jwa Ditlhaeletsano mo Botswana (BTA) le ne la ntsha dikabelo go thusa makgotla a le mmalwa mo nakong ya pego eno. Makgotla a le masome mabedi le boferabobedi (28) a ne a bona dithuso tsa madi a selekanyo sa P463 899.00 go tswa BTA. Dikolo di ferabobedi (8) di filwe dikhomputara di robabongwe (9), metshine e e gatisang e le metlhano (5) le metshine e e dirang meriti e le meraro (3). Makgotla a mangwe a a boneng dithuso a akaretsa makgotla a bopelo-tlhomogi le Kgotla ya Boikuelo ya Makgotla a Setswana.

BTA e ne gape ya agela mme mongwe wa motlhoki, Mme Bonyana Tsikang, ntle ya bonno e e dikamore tharo kwa motseng wa Pitsane mo kgaolong ya Borwa. Kago ya ntle e e lopile madi a a kanang ka P50, 000.00. mme Tsikang o ne a roletwa ntle e kwa moletlong o o neng o tseneletswe ke Tona ya Tikologo, Diphologolo le Bojanala, Motlotlegi K. Mokaila.

Tirisano le Mafatshefatshe

Mo ngwageng wa 2007/08, Lekgotla la Bolaodi jwa Ditlhaeletsano mo Botswana le ne la amogela setlhopha sa baeng go tswa Ethiopia, se se neng se tsile go ithuta gore bolaodi jwa kgaso bo dirwa jang mo Botswana mo go ba Khuduthamaga ya Kgaso ya mo Botswana.

Baeng ba ba ne ba bona sebaka sa go etela diromamowa dingwe le badiri bangwe ba puso mo loetlong lwa bone.

Botsaya Karolo mo Ditiragalong tsa Mafatshefatshe 2007/2008

Mo ngwageng o o sekasekwang o, badiri ba BTA ba ne ba tsaya karolo mo diphuthegong le dithuto puisano tse di latelang:

- Twelfth Meeting of the Telecommunications Development Advisory Group (T-DAG), Geneva, Switzerland ka 16 – 20 Moranang 2007;
- Eighth Forum on Telecommunications Regulation in Africa (FTRA) e tshwaretswe kwa Nairobi, Kenya, 04- 07 Seetebosigo 2007;
- 2nd Connecting Rural Communities Africa Forum 2007, Nairobi, Kenya, 21-24 Phatwe 2007;
- Special General Meeting of the Communications Regulators Association of Southern Africa, Maputo, Mozambique, 03 - 04 Lwetse 2007;
- ITU Forum, Bridging the ICT Standardisation Gap, Kigali Rwanda 30 Lwetse – 05 Phalane 2007 ;
- Second Meeting of the ITU-D Study Group 1, Geneva, Switzerland, 16 - 22 Lwetse 2007;
- Commonwealth Telecommunications Organisation (CTO) General Meeting, Kingston, Jamaica, 21 Lwetse - 02 Phalane 2007;
- Connect Africa Summit, Kigali, Rwanda 28 - 31 Phalane 2007;
- World Radiocommunication Conference 2007, Geneva Switzerland 20 Phalane – 18 Ngwanaatsele 2007;
- Telecommunication Development Advisory Group (T-DAG) and its Working Groups 02 - 09 Tlhakole 2008;
- Africa/Middle East Next Generation Networks Summit 2008, Johannesburg, South Africa, 17 – 20 Tlhakole 2008;
- CRASA Executive Committee Meeting, Johannesburg, South Africa, 05 -07 Mopitlo 2008; le
- ITU 8th Annual Global Symposium for Regulators, Pattaya, Thailand, 08-15 Mopitlo 2008.



TSHEKATSHEKO YA BODIREDI

Lenaneo la Maano la BTA

Ngwaga o o sekasekwang o ke bontlha jwa lenaneo la maano la 2004 – 2009. Ka Ngwanaatsele 2007, BTA e ne ya nna le phuthego go sekaseka lenaneo le. Maikaelelo a bokopano jo e ne e le go itebaganya le Lenaneo la Maano la BTA le le mo tirisong, le go le sekaseka go lebilwe diphetogo tse di mo mmarakeng wa ditlhaelatsano mono gae le lafatshe ka bophara, ga mmogo le diphetogo tse di diragetseng mo motheong wa BTA ka khiri ya Mookamedi Mogolo le Mothusa Mookamedi Mogolo.

Tshekatsheko ya Bodiredi

Dipalo tsa badiri

Mangwe a maikaelelo a go thapa badiri ga BTA ke go thapa le go tshegetsatsa badiri ba ba tlhokegang. Mo ngwageng o o sekasekwang o, BTA e ne e dirisa mokgwa wa go thapa o o lopang ditlhwatlhwa tse di kwa tlase, o ikaegile ka boleng jwa bodiredi. BTA e tsere tsela ya go dira go le go ntsi ka badiri ba ba lekanetseng, kwa ntle ga ditiro tse di tlhokang badiri bangwe ba go sa kakeng ga dirwa ba seo. Lekalana la semolao le la tiragatso molao a ne a kopanngwa go nna lengwe. Lekalana le lesa la go dupa dibuka tsa madi tsa mo Lekgotleng le ne la tlhamiwa, mme phatlha ya bodiredi ya tlatswa gone mo Lekgotleng.

Ka Mopitlo 2008, dipalo tsa badiri di ne di eme kwa go 72, e le koketsego ya bongwe (1) go tswa mo dipalong tsa Mopitlo 2007. Koketsego e e tsetswe ke go thapiwa ga badiri ba le bane, morago ga gore ba le bararo ba tlogele Lekgotla.

Fa go lebiwa dipalo tsa badiri ba konokono ba bolaodi kgathanong le ba ba bathusang, 44% ke ba konokono fa 56% e le bathusi.

Table 4: Dipalo tsa badiri gotswa ka ngwaga wa 2003-2008

Year	Male	Female	Total
2003	38	25	63
2004	40	27	67
2005	41	27	68
2006	44	26	70
2007	45	26	71
2008	44	28	72

Letlole la Penshene

Letlole la Penshene la Badiri ba Lekgotla la Bolaodi jwa Ditlhaeletsano ke letlole le go kokotlelediwang mo go lone. Letlole le le na le batlhokomedi, mme batlhokomedi ba ke bangwe ba badiri le botsamaisi jwa Lekgotla. Batlhokomedi ba ba dira ditshwetso tse di amanang le kgodiso ya madi a letlole. Dithoto tsa Letlole ga di kopane ka gope le tsa Lekgotla. Badiri botlhe kwa ntle ga ba dikonteraka ba mo lenaneong la letlole le, mme ga ba lopiwe go ntsha madi ape. Ka Mopitlo 2008, Letlole le ne le na le maloko a le masome a matlhano (50), mme badiri ba le masome mabedi (20) ele ba konteraka, ka jalo ba se mo go lone.

Pabalesego le Boitekanelo

Jaaka mohiri, BTA e na le maikarabelo ka semolao go bona gore e tlamela babereki ba yone ka go ba fa tlhokomelo e e lekanetseng mo go ka kgonagalang, le go ba sireletsa mo go sepe se se ka ba amang mo go tsa boitekanelo, jalo jalo. Bodiphatsa jwa HIV/AIDS ga bo kake jwa ikgatholosiwa ka jaana bo ama badiri ga mmogo le mohiri. Go na le mananeo a le mmalwa a Lekgotla le a beileng go ela seemo tlhoko. Fa re tla mo botsogong jwa badiri, go na le fa badiri le ba malapa a bone e leng maloko a makgotla a tsa pholo, a e leng gore BTA e ba ntshetsa mo go bonalang go fokotsa morwalo wa go ntsha madi ga badiri. BTA e na le makgotla a pholo a le mabedi, la ntlha, BTA e duelela badiri madi otlhe, fa le lengwe BTA e ntsha 80% mmereki a bo a ntsha 20% ya madi a a lopiwang. Lenaneo le mmereki a ntshang sengwe le na le ditlamelo tse di ntsi, mme go tswa mo modiring gore a o a le tsaya kgotsa jang.

Dikgang tsa Meamusu ya Badiri

- **Therisano**

Lekgotla le dumela mo go reriseng badiri ba lone gore ba nne ba itse ka tse di diragalang ka dintlha tse di ba amang, le gore ba abelane megopolo e e ka busetsang Lekgotla le bone badiri.

Mookamedi Mogolo le badiri ba kopana makgetho a le mmalwa go buisana le go abelana megopolo ka dintlha tse di ka tlhabololang Lekgotla go ya pele le gore le kgone go thusa setšhaba sentle. Mo ngwageng o o sekasekwang o, go nnile le diphuthego tse nne.

- **Ditogamaano tsa Meamusu ya Badiri**

Kgatelopele e kgolo e e dirilweng ke lekalana monongwaga ke go tlhama mekwalo ya ditogamaano e le mene (4).

1. **Mabaka a Bodiredi**

Mabaka a Bodiredi a BTA a tsene mo tirisong ka 1997, mme a ne a nna a baakangwa fa go tlhokega. Ka 2004, Lekgotla le ne la simolola lenaneo la maano, mme se se ne sa dira gore Mabaka a Bodiregi a fetolwe.

Diphetogo mo molao motheong wa lefatshe la Botswana le tsone di ne tsa dira gore Mabaka a Bodiredi a sekasekwe gore a nyalangwe le se se diragalang mo mmerekong lefatshe lotlhe. Go ne ga tshwarwa dithuto-puisano di le pedi le badiri, mme megopolo ya bone ya akaretswa mo Mabaka a Bodiredi.

Tshekatsheko ya Bodiri (tswelediso)



Badiri ba BTA ba tsene phuthego ya go sekaseka metlhale ya go tokafatsa seemo sa tiro. Badiri ba ne gape ba tsene megwanto ya malatsi a segopotso sa bolwetse ja HIV/AIDS

2. Ditselana tsa Maitsholo

Ditselana tsa Maitsholo ke mokwalo o o supang maitsholo a Lekgotla le a solofelang mo badiring ba lone.

3. Ditogamaano tsa Ithutuntsho ya Badiri

Maikaelelo a ditogamaano tse ke go rutuntsha badiri gore ba kgone go fitlhelela seemo sa bodiredi se se tlaa ntshang maduo a a nametsang mo tirong. Ditogamaano tse di itebagantse le kgolo ya badiri le tlhabololo bodiredi jwa bone.

Matshego a ditogamaano tse ke go:

- lomagantswe le tshekatsheko maduo;
- tshekatsheko ya letlhoko la ithutuntsho;
- tse di tlhokiwang ke Lekgotla; le go
- dira mananeo a ithutuntsho.

4. Ditogamaano tsa Lenaneo la Tshekatsheko Maduo

Go ne go tlhokega gore ditogamaano tse di nne teng morago ga go tlhama lenaneo la maano la dingwaga tse thano ka 2004 le tshimololo ya lenaneo la tshekatsheko maduo ka 2008. Ditogamaano tse di fa tsela ya go tsamaisa lenaneo la tshekatsheko maduo mo BTA.

Tsamaiso ya tshekatsheko maduo mo tirong e tlaa sekasekwa ke Komiti ya Tshekatsheko Maduo. Komiti e e na le maloko a supa (7), a le mabedi a tswa mo lekalaneng la HR mme ba na le maikarabelo a go ntsha pego ya tshekatsheko maduo ga raro mo ngwageng.

Ithutuntsho le Ikketso Dithuto ya Badiri

Lekgotla le tswelutse ka go isa badiri ba lone kwa dithutong tsa nakwana le tsa lobaka lo lo leele go oketsa dikitso tsa bone gore ba kgone go itebaganya le ditiro tsa bolaodi jwa mhama wa ICT. Ka jaana go na le badiri ba le ba thano ba ba ileng dithutong tse di latelang:

PhD	1
Masters Degree	2
First Degree	2
Total:	5





LEKALANA LA GO DUPA DIBUKA TSA MADI

Lekalana le la go Dupa Dibuka tsa Madi le tlhomilwe ka Lwetse 1, 2007. Maikemisetso a lone ke go fa ditirelo tsa bokanoki le megopolo e e ikemetseng ka nosi e e podi matseba go Khuduthamaga/Komiti ya tsa Madi le go Dupa Dibuka tsa Madi jaaka go tlhokega.

Lekalana la go Dupa Dibuka tsa Madi

Lekalana le le thusa Lekgotla go fitlhelela maikano a lone ka go tsisa mokgwa wa tshekatsheko o o lolameng mo go tsa peo leitho ya bodiphatsa le ditselana tse dingwe tsa botsamaisi. Lekalana le le thusa Khuduthamaga/Komiti ya tsa Madi le go Dupa Dibuka tsa Madi ka go ntsha mekwalo ya ditshekatsheko, megopolo le ditshwetso mabapi le ditiro tsa Lekgotla.

Gore go fitlhelelwe Ditekanyetso tsa go Dupa Dibuka tsa Madi, Lekalana le ne la tswa ka lenaneo la go dupa dibuka tsa madi le lebile bodiphatsa jo bo ka tlhagang. Khuduthamaga/Komiti ya tsa Madi le go Dupa Dibuka tsa Madi e dumetse lenaneo le ka Mopitlo 2008. Lenaneo le le supa ditiro tsa go dupa dibuka tsa madi tse di tlaa dirwang mo dingwageng tsa 2008 go ya 2011. Jaaka bontlha bongwe jwa se, go ne ga diragatswa tiro nngwe ka maikaelelo a go:

- Supegetsa botsamaisi dintlha tsa go dupa dibuka tsa madi mo nakong eno;
- Dira mokwalo o o supang bodiphatsa jo bo ka tlhagelang Lekgotla le go boloka mokwalo o; le go
- Sekaseka seemo sa bodiphatsa jo bo lemogilweng.

Dibukana tse di latelang di ne tsa ntshiwa morago ga tiro e, mme di supegetsa Lekalana tsela:

- Bukana ya go dupa dibuka tsa madi; le
- Tumalano ya go dupa dibuka tsa madi.

Pego ya ntlha ya go dupa dibuka tsa madi e ntshitswe ka Tlhakole 2008. Pego e e ne ya supa fa go tlhokega gore Lekgotla le tseye kgato ya ponyo leitho go busetsa seemo mo taolong. Botsamaisi bo itlamile go diragatsa megopolo ya pego e.

Lekalana la go Dupa Dibuka tsa Madi le nnile le karolo e kgolo mo go rarabololeng dintlha tsa makwalo a ngwaga o o fetileng a botsamaisi.

TSHEKATSHEKO YA TSA MADI

Tshekatsheko ya Maduo

BTA e dirile morokotso o o fetang didikadike tsa Pula di le 12.04 (P12.04 million), mo go rayang koketsego ya 16% fa go tshwantshangwa le didikadike tse P6.56 wa ngwaga o o fetileng.

Tshekatsheko ya tsa Madi

Madi a dipelo a tsholetsegile ka 25% go tswa kwa go didikadike tse P48.7 ngwaga o o fetileng go ya kwa go didikadike tse P61.1 mo ngwageng o. Koketsego e tswa mo koketsegong ya dipelo tsa bagwebi, le madi a a duelelwang tseletso e ntsha e e sa tswang go tsenngwa mo tirisong ka mabaka a tseletso e e akaretsang ditirelo ka bophara. Dipelo tse dingwe di oketsegile go le go nnye go ya kwa go didikadike tse P1.11 fa go bapisiwa le didikadike tse P1.04 wa ngwaga o o fetileng. Dipelo tse di tswa mo dikagong tsa diofisi tse BTA e di hiriseditseng mmuso. Dipelo tsa dipeeletso le tsone di fokotsegile fa go tshwantshannngwa le ngogola, ka morokotso o o wetseng tlase ka didikadike tse P0.62, go tswa kwa didikadikeng tsa dipula tse 4.71 go ya kwa didikadikeng tse P4.09. Kwelo tlase e e dirilwe ke dituelo tsa ba-na-le-seabe tsa dingwaga tsa madi tsa 2005/6 le 2006/7 ga mmogo le dituelo tse di dirilweng fa go agiwa lefelo la peo leitlho kwa Phakalane (Phakalane Monitoring Centre).

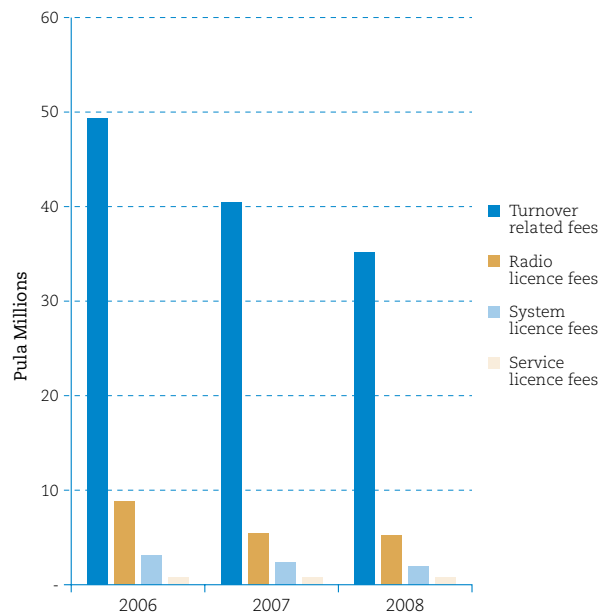
Dituelo tsa botsamaisi ka ntlha e nngwe di godile ka 13% go ya kwa didikadikeng tsa dipula di le 54.3 (P54.3m) fa go tshwantshannngwa le didikadike tsa dipula di le 47.9 (P47.9m) wa ngwaga o o fetileng. Mabaka e le go gola ga madi a a lopilweng go dira dipaakanyo le tlhokomelo, go shwafatsa, bakanoki, tsa itshireletso, le inthanete. Madi a go baakanya le go tlhokomela a ne a oketsega ka ntlha ya dituelo tsa tumalano ya tlhokomelo ya dingwaga tse tlhano ya tsamaiso le tlhokomelo ya maranyane a seyalemoya (Automated Frequency Spectrum System-ASMS), e mo go yone madi a ledi la Amerika a 38,712 (U\$38,712) kgotsa P250,000 a neng a duelwa yo o ntshang di dirisiwa tsa ASMS, TCI International, gararo mo ngwageng. Kwelo tlase ya madi e ne ya oketsega ka ntlha ya go remelela mo tirong ya ASMS. Madi a tsa itshireletso a ne a ya kwa godimo thata ka mabaka a gore bokete jwa madi a a dirisitsweng mo ngwageng o o fetileng a ne a beetswe dituelo tsa ASMS fa mo ngwageng o a dirisitswe. Le fa go ntse jalo, go ne ga nna le phokotsego ya madi a a dirisitsweng mo go tse dingwe jaaka diphuthago, go rutuntsha le go ipapatsa.

Table 5: Maduo a Lekgotla a sobokilwe jaana:

	2008	2007	2006
	Pula million	Pula million	Pula million
Revenue	61.09	48.7	42.02
Other income	1.11	1.04	1.44
Operating expenses	-54.25	-45.39	-33.35
Donation to Government of Botswana		-2.5	-10
Finance Income	4.09	4.71	5.63
Surplus for the year	12.04	6.56	5.74
Capital Employed	162	150	145
Return on Capital Employed	7.4%	4.4%	4.0%

Dipelo

Dipelo di akaretsa madi a dituelo tsa ditesiitso tsa diromamowa, dituelo tsa ditesiitso tsa tsamaiso le dituelo tsa ditesiitso tsa ditirelo. Madi a tseletso ya ditirelo a tswa mo mading a a duediswang bagwebi e le a tseletso ya ditirelo mme a akaretsa dipelo le a eseng a dipelo. Madi a dipelo a tsewa mo mading otlhe a a dirilweng ke bagwebi ba megala e e duelelwang mme a duelelwa kwa pele gararo mo ngwageng. Madi a a sa buseng dipelo ke a a tlhometsweng ruri e le a ditirelo mme a duelwa ngwaga le ngwaga kwa tshimologong ya ngwaga. Dipelo di ne tsa oketsega go tswa kwa didikadikeng tsa dipula di le 40.8 (P40.8m) mo ngwageng o o fetileng go ya kwa didikadikeng tse di 49.1 (P49.1m), go emela koketsego ya 20%. Madi a a senang morokotso a ne a le kwa tlase mo ngwageng o morago ga diphetogo tsa go fa bagwebi tseletso e e tsenyang ditirelo tsothle. Dituelo di ne tsa wela tlase kwa didikadikeng tsa dipula di le 0.77 (P0.77m) fa go tshwantshannngwa le didikadike tse 1.87 (P1.87m) ngogola. Madi a ditesiitso ka ntlha e nngwe a ne a gola ka 92% a tsiwa ke diphetogo mo lenaneong la tuelo morago ga go ntshiwa ga ditesiitso tse disha mo ngwageng ono. Madi a ditesiitso tsa seromamowa le one a oketsegile ka 51% mo tsamaong ya ngwaga go tswa kwa go didikadike di le P5.26 go ya kwa go tse P7.93. Figure 9 fa tlase se supa dipelo mo dingwageng tse di fetileng.



Dipelo tse Dingwe

Madi a mangwe a a tsenyeng a akaretsa madi a a bonweng fa go rekisiwa dithoto tsa sennelaruri, madi a a bonweng fa ba-na-le-seabe ba reka dikopo tsa kabo ditiro tsa Lekgotla, le madi a go hirisiwang matlo le bontlhabongwe jwa diofisi tsa BTA mo mmusong wa Botswana. Madi a a bonweng ka go hirisa mantlo a dira 64% ya madi otlhe a metlhale e mengwe ya madi a Lekgotla.

Tshekatsheko ya tsa Madi (tswelediso)

Dituelo tsa go Tsamaisa Lekgotla

Dituelo tsa go tsamaisa lekgotla di godile ka 36% magareng ga 2006 le 2007 fa go tshwantshiwa le koketsego ya 13% magareng ga 2007 le 2008. Mabaka a kwelo tlase mo mading a tsamaiso mo dingwageng tse ke phokotsego ya madi a a duetseng bakanoki ka 2008. Madi a bakanoki a oketsegile ka 21% mo ngwageng o o sekasekwang fa go bapisiwa le koketsego ya 64% ka 2007. Phokotsego ya madi a a dirisitsweng mo badiring mo ngwageng o le yone e thusitse go isa madi a botsamaisi kwa tlase. Mo magareng ga 2006 le 2007, madi a badiri a oketsegile ka 18% go tswa kwa go didikadike di le P15.5 go ya kwa go P18.2m fa go tshwantshannngwa le koketsego ya 9% go tswa kwa go didikadike di le P18.2 ka 2007 go ya kwa go di le P19.8 ka 2008.

Madi otlhe a Lekgotla

Dipoelo tsa dipeeletso di akaretse morokotso o o tswang mo mading a dipeeletso a a bewang mo bankeng. Madi a peeletso a diretse Lekgotla morokotso wa selekanyo sa 11.47%, mme e ne e le madi a a beeleeditsweng mo nakong e khutshwane. Le fa go ntse jalo, morokotso o o tsenyeng o wetse tlase ka 13%, segolo bogolo ka mabaka a phokotsego ya madi jaaka go ne go duelelwa lefelo la peo leitho kwa Phakalane. Madi otlhe a a dueletseng tiro eo mo tsamaong ya ngwaga ke didikadike di le P6.26.

Fa go sobokwa, madi a a dirisitsweng a ne a le kwa godimo go feta a ngwaga o o fetileng ka koketsego ya didikadike tse P5.24 kgotsa 78%. Koketsego e ne e tswa mo kagong ya lefelo la botlhokomedi la Phakalane le theko ya dikoloi tse tlhano. Bobedi jwa dikoloi tse e ne e le tse di emisetsang tse di kgologolo. Gone ga rekwa gape dikhomputara le mafaratilhatlha a dikhomputara (server) tse le tsone di neng di tshwanetse go shafatswa. Madi a a dirilweng a selekanyo sa didikadike tse P12 mo ditirong tsa go tsamaisa a ne a lekane dituelo tsa ditirelo mo tsamaong ya ngwaga.

Dipeeletso

BTA e beeleeditse dilo dingwe e lebeletse letlhoko la yone la madi. BTA e beeleeditse ka go baya madi a matsubo mo dibankeng tse di nang le morokotso o o botoka.

BTA gape e beeleeditse ka dithoto tse e leng matlo le go hirisetse mmuso wa Botswana bontlha bongwe ja kago ya yone. Khuduthamaga ya BTA e feditse go rekisa matlo a yone a a mo motseng mogolo, mme thulaganyo e tlaa wediwa mo ngwageng o o tlang wa madi.

Tiriso le Seemo sa madi

Madi a a dirilweng mo tsamaisong ya ngwaga a godile go tswa mo go didikadike tse P6.03 mo ngwageng o o fetileng go ya kwa go didikadike tse P29.22 mo ngwageng o. Se se tsisitswe ke dipoelo tse di oketsegileng mo ngwageng go tswa kwa go didikadike tse P6.56go ya go didikadike tse P12.04. Koketsego e gape e tsisitswe ke go ya tlase ga madirelo le tse dingwe tse di amogetsweng ga mmogo le koketsego mo madirelong le tse dingwe tse di duelelwang.

Seemo sa Madi

Seemo sa madi se se tsisitsweng ke ditiro tsa tsamaiso, pele ga madi a tiriso, ke P18.9m, fa go tshwantshannngwa le P6.13m wa ngwaga o o fetileng. Seemo sa madi a a tsamaiso a akaretse madi a a dirisitsweng a selekanyo sa 243%

BTA e dumela fa e na le madi a a lekanyeng go duelela go tsamaisa ditiro le madi a a dirisitsweng a kakanyetso mo ngwageng wa madi wa 2008/2009. Go solofetswe fa tsamao ya madi e tla tswelela e tokafala ka jaana ga go a solofelwa ditiro dipe tse di tona mo ngwageng tse pedi tse di tlang.

Table 6: Dituelo tsa madi

	2008	2007	2006
	Pula Million	Pula Million	Pula Million
Cash Available for Investing	29.21	6.03	33.33
Capital Expenditure	12.00	6.76	34.22
Self Financing Ratio	243%	97%	142%

Tiriso le seemo sa madi

	2008	2007	2006
	Pula Million	Pula Million	Pula Million
Cash flow from operating activities	29.22	6.03	29.33
Cash flow from Investing Activities	-11.57	-6.66	-33.63
Cash flow from financing activities	-1.91	2.91	4
Total cash movement for the year	15.74	2.28	-0.30
Cash at the beginning of the year	46.88	44.59	44.88
Cash at the end of the year	62.62	46.87	44.58

Tshoboko



BTA e tsaya karolo mo morerong ya sechaba jaaka Ditshupo tsa FOBEX/ITEX, le go fa bana ba dikole mafoko a kgotlhatso ko meletlong ya bone.

Kwa bofelong, ngwaga o o ne o tletse dikgwetlho le ditiragalo, bogolo jang ka tshimolodiso ya motheo o mosha wa semolao le bolaodi mo tikologong ya mmara o o atolositsweng.

Le fa go ntse jalo, isago e na le dikgwetlho dingwe tse re tlaa tshwanelwang ke go itebaganya le tsone ka mashetla. Dintlha di tshwana go bona ditirelo ga botlhe; go gokela ditirelo kwa di seong; go tshwaraganela mafaratlhatlha le mebaraka e mengwe e tshwana ya metsi le motlakase; kabo ya matshwao mo dinakong tse tsa tomagano; go nankola di le mmalwa, go tlaa tlhoka gore re tshwaraganele tiro e. Ke tswelela ka go kgothatsa badiri ba Lekgotla gore ba seka ba itiya ka katlego ya tse di fetileng, mme ba lebe isago ya bolaodi jwa ditlhaeletsano go bona ditshono tse di ka busetsang ba-na-le-seabe. Mhama wa ditlhaeletsano o na le ditshono ka go farologana, tse di ikaegileng ka bolaodi jwa mmara. Ditlhabologo tsa botegeniki di botlhokwa mo mhaeng o, mme ke ka moo Lekgotla le emisitseng go aba ditesi tse di tlamang bagwebi ka didirisiwa, mme la tsaya tse di bulegileng.

Dibuka tsa madi tsa Lekgotla tse di dupilweng di tswelela ka go supa fa go na le dipoelo. Se se ka tswa se bakiwa ke mowa wa go dira o o tlhapileng mabapi le go atolosetswa pele ga mmara. Lekgotla le tlaa tswelela ka go baya motheo o o motlhofo o o itsegeng gore bagwebi ba kgone go bona dipoelo mo dipeeletsong tsa bone, mme gape badirisi ba ditirelo ba di bona ka bofelo le ditlhwatlhwa tse di lolameng.

Dipoelo tsa Lekgotla di tlaa tswelela ka go gola jaaka badirisi ka bontsi ba gokela mo mafaratlhatlheng a ditirelo jaaka bagwebi ba tsisa ditirelo tse di farologaneng.

Lekgotla le tlaa tswelela ka go diragatsa motheo o o tlhabolotsweng wa semolao le bolaodi mo mmarakeng o o atolositsweng, gore ba-na-le-seabe ba fokotse dipharologanyo tse di teng mo tirisong ya maranyane mo metse selegaeng le ditoropo. Go botlhokwa gore ba-na-le-seabe ba nne le kgatlhego mo mererong ya maranyane a dikitso le ditlhaeletsano gore Lekgotla le kgone go sega tema ya dintlha tsa bolaodi le ditogamaano. Ka jalo, ke baya mo Pusong, Khuduthamaga, Botsamaisi, Badiri le Ba-na-le-seabe go diragatsa maitlamo a.

Lekgotla le tlaa tswelela ka maiteko a go tokafatsa mhama wa ditlhaeletsano, mme le tlaa ntefatsa, fa go kgonegalang, gore bagwebi ba dirisa maranyane a masha a a ntshang ditirelo tse di botoka ka ditlhwatlhwa tse di lolameng.

Annual Financial Statements

Independent Auditor's Report	43
Members' Responsibilities and Approval	44
Members of the Board Report	45
Balance Sheet	46
Income Statement	47
Statement of Changes in Funds	48
Cash Flow Statement	49
Accounting Policies	50
Notes to the Financial Statements	54
Detailed Income Statement	65

Independent Auditor's Report

To the members of Botswana Telecommunications Authority

Report on the Financial Statements

We have audited the accompanying annual financial statements of Botswana Telecommunications Authority, as set out on pages 46 to 64, which comprise the directors' report, the balance sheet as at March 31, 2008, and the income statement, the statement of changes in funds and cash flow statement for the year then ended, a summary of significant accounting policies and other explanatory notes.

Members' Responsibility for the Financial Statements

The Members of the board are responsible for the preparation and fair presentation of these annual financial statements in accordance with International Financial Reporting Standards, and in compliance with the Telecommunication Act, 1996 (As amended by Act No 38 of 2004). This responsibility includes: designing, implementing and maintaining internal control relevant to the preparation and fair presentation of annual financial statements that are free from material misstatement, whether due to fraud or error; selecting and applying appropriate accounting policies; and making accounting estimates that are reasonable in the circumstances.

Auditors' Responsibility

Our responsibility is to express an opinion on these annual financial statements based on our audit. We conducted our audit in accordance with International Standards on Auditing. Those standards require that we comply with ethical requirements and plan and perform the audit to obtain reasonable assurance whether the annual financial statements are free from material misstatement.

An audit involves performing procedures to obtain audit evidence about the amounts and disclosures in the annual financial statements. The procedures selected depend on the auditors' judgement, including the assessment of the risks of material misstatement of the annual financial statements, whether due to fraud or error. In making those risk assessments, the auditor considers internal control relevant to the entity's preparation and fair presentation of the annual financial statements in order to design audit procedures that are appropriate in the circumstances, but not for the purpose of expressing an opinion on the effectiveness of the entity's internal control. An audit also includes evaluating the appropriateness of accounting policies used and the reasonableness of accounting estimates made by the management, as well as evaluating the overall presentation of the annual financial statements.

We believe that the audit evidence we have obtained is sufficient and appropriate to provide a basis for our audit opinion.

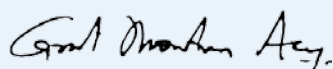
Opinion

In our opinion, the annual financial statements present fairly, in all material respects, the financial position of Botswana Telecommunications Authority as of March 31, 2008, and of its financial performance and its cash flows for the year then ended in accordance with International Financial Reporting Standards, and in the manner required by the Telecommunication Act, 1996 (As amended by Act No 38 of 2004).

Report on Other Legal and Regulatory Requirements

In accordance with Section 14(3) of the Telecommunication Act, 1998 (As amended by Act No 38 of 2004), we confirm that:

- We have received all the information and explanations, which, to the best of our knowledge and belief, are necessary for the performance of our duties as auditors.
- In our opinion the accounts and related records of the Authority have been properly maintained
- The Authority has complied with the financial provisions of the Telecommunications Act No 15 of 1996 (As amended by Act No 38 of 2004)
- The financial statements prepared by the Authority were prepared on a basis consistent with that of previous year except for adoption of new standards/new amendments and interpretations issued by International Accounting Standards Board, the details of which are covered under note 2 to these annual financial statements.



Certified Public Accountants

Gaborone

Date:

Members' Responsibilities and Approval

for the year ended March 31, 2008

The members of the board are required by section 14 of the Telecommunication Act, 1996, to maintain adequate accounting records and are responsible for the content and integrity of the annual financial statements and related financial information included in this report. It is their responsibility to ensure that the annual financial statements fairly present the state of affairs of the Authority as at the end of the financial year and the results of its operations and cash flows for the period then ended, in conformity with International Financial Reporting Standards. The external auditors are engaged to express an independent opinion on the annual financial statements.

The annual financial statements are prepared in accordance with International Financial Reporting Standards and are based upon appropriate accounting policies consistently applied except for adoption of new standards as stated in Note 2 to the annual financial statements and supported by reasonable and prudent judgments and estimates.

The members of the board acknowledge that they are ultimately responsible for the system of internal financial control established by the Authority and place considerable importance on maintaining a strong control environment. To enable the members to meet these responsibilities, the board sets standards for internal control aimed at reducing the risk of error or loss in a cost effective manner. The standards include the proper delegation of responsibilities within a clearly defined framework, effective accounting procedures and adequate segregation of duties to ensure an acceptable level of risk. These controls are monitored throughout the Authority and all employees are required to maintain the highest ethical standards in ensuring the Authority's business is conducted in a manner that in all reasonable circumstances is above reproach. The focus of risk management in the Authority is on identifying, assessing, managing and monitoring all known forms of risk across the Authority. While operating risk cannot be fully eliminated, the authority endeavours to minimise it by ensuring that appropriate infrastructure, controls, systems and ethical behaviour are applied and managed within predetermined procedures and constraints.

The members of the board are of the opinion, based on the information and explanations given by management, that the system of internal control provides reasonable assurance that the financial records may be relied on for the preparation of the annual financial statements. However, any system of internal financial control can provide only reasonable, and not absolute, assurance against material misstatement or loss.

The members of the board have reviewed the Authority's cash flow forecast for the year to March 31, 2009 and, in the light of this review and the current financial position, they are satisfied that the Authority has access to adequate resources to continue in operational existence for the foreseeable future.

The members of the board are primarily responsible for the financial affairs of the Authority. The external auditors are responsible for independently reviewing and reporting on the Authority's annual financial statements. The annual financial statements have been examined by the Authority's external auditors and their report is presented on page 43.

The annual financial statements set out on pages 45 to 66, which have been prepared on the going concern basis, were approved by the members of the board on _____ and were signed on its behalf by:



Chairperson
Gaborone



Chief Executive

Members of the Board Report

for the year ended March 31, 2008

The members of the Board have pleasure in submitting their report, which forms part of the financial statements of the Authority for the year ended 31 March 2008.

1. Activities

The Authority is a body corporate, established under the Telecommunications Act [CAP 72:03] to regulate, supervise and promote the provision of efficient telecommunications services in Botswana.

The Authority's surplus for the year amounted to Pula 12 037 490 (2007: Pula 6 563 953).

2. Post balance sheet events

In the meeting held on 3 July 2008, the Board resolved to provide dividend payable to Government of Botswana amounting to Pula 3 009 372 being 25% of the surplus for the year ended 31 March 2008 which is in line with the requirements of the Government directive CAB 40/2004. The post balance sheet events are appropriately disclosed in the financial statements as per the requirements of International Financial Reporting Standards.

The Board resolved to make a Donation of Pula 4 million (2007: Pula 2,5 million) towards the Universal Service Fund for the year ended 31 March 2008.

3. Accounting policies

During the year the Authority adopted certain new IFRS amendments, standards and interpretations, the details of which are stated in note 2 to the financial statements.

4. Members' interest in contracts

None of the Members or Officers of the Authority had an interest in any contract during the financial year.

5. Members of the Board

The members of the Board of the Authority during the year and to date of this report are as follows:

Dr. J Mothibi (Chairman)
Dr. T Nyamadzabo
Dr. T Matome
Dr. M Mpotokwane (Vice Chairman)
Mr. R C Eaton

Balance Sheet

for the year ended March 31, 2008

	Note(s)	2008 P	2007 P
Assets			
Non-Current Assets			
Property, plant and equipment	5	108 042 749	107 668 340
Current Assets			
Trade and other receivables	7	8 713 849	10 060 208
Prepayments		439 293	654 232
Cash and cash equivalents	8	62 616 712	46 877 883
		71 769 854	57 592 323
Non-current assets held for sale	9	6 622 838	6 421 838
Total Assets		186 435 441	171 682 501
Funds and Liabilities			
Funds			
Proposed dividends		3 009 372	3 074 920
Accumulated surplus		159 112 355	150 084 237
		162 121 727	153 159 157
Current Liabilities			
Trade and other payables	12	10 235 197	5 609 262
Government of Botswana - Universal Service Fund	11	14 078 517	12 914 082
		24 313 714	18 523 344
Total Funds and Liabilities		186 435 441	171 682 501

Income Statement

for the year ended March 31, 2008

	Note(s)	2008 P	2007 P
Revenue	14	61 085 480	48 696 362
Other income		1 113 034	1 043 655
Operating expenses		(54 254 166)	(45 390 875)
Donation to the Government of Botswana		—	(2 500 000)
Finance income	16	4 093 142	4 714 811
Surplus for the year		12 037 490	6 563 953

Statement of changes in funds

for the year ended March 31, 2008

	Proposed Dividends P	Accumulated surplus P	Total funds P
Balance at March 31, 2006	1 383 364	145 211 840	146 595 204
Surplus for the year	—	6 563 953	6 563 953
Dividend to the government transferred to proposed dividends	1 691 556	(1 691 556)	—
Total changes	1 691 556	4 872 397	6 563 953
Balance at March 31, 2007	3 074 920	150 084 237	153 159 157
Surplus for the year	—	12 037 490	12 037 490
Dividends paid	(3 074 920)	—	(3 074 920)
Dividend to the government transferred to proposed dividends	3 009 372	(3 009 372)	—
Total changes	(65 548)	9 028 118	8 962 570
Balance at March 31, 2008	3 009 372	159 112 355	162 121 727

Since the authority has not created any other funds, the total accumulated surplus and proposed dividends equals to the total funds.

Cash flow Statement

for the year ended March 31, 2008

	Note(s)	2008 P	2007 P
Cash flows from operating activities			
Cash generated from operations	18	25 124 109	1 319 796
Finance income		4 093 142	4 714 811
Net cash from operating activities		29 217 251	6 034 607
Cash flows from investing activities			
Purchase of property, plant and equipment	5	(11 999 211)	(6 755 302)
Sale of property, plant and equipment	5	431 278	98 864
Net cash from investing activities		(11 567 933)	(6 656 438)
Cash flows from financing activities			
Movement in Universal Service Fund		1 164 435	2 914 082
Dividends paid to the Government	19	(3 074 924)	—
Net cash from financing activities		(1 910 489)	2 914 082
Total cash movement for the year		15 738 829	2 292 251
Cash at the beginning of the year		46 877 883	44 585 632
Total cash at end of the year	8	62 616 712	46 877 883

Accounting Policies

for the year ended March 31, 2008

1. Presentation of Annual Financial Statements

The annual financial statements have been prepared in accordance with International Financial Reporting Standards, and the requirements of the Telecommunications Act No 15 of 1996 (As amended by Act No 38 of 2004). The annual financial statements have been prepared on the historical cost basis, except for investment property, non current assets held for sale and certain financial instruments, which are stated at fair value, and incorporate the principal accounting policies set out below.

These accounting policies are consistent with the previous period, except for the changes set out in note 2 Changes in accounting policy

1.1 Significant judgements

In preparing the annual financial statements, management is required to make estimates and assumptions that affect the amounts represented in the annual financial statements and related disclosures. Use of available information and the application of judgement is inherent in the formation of estimates. Actual results in the future could differ from these estimates which may be material to the annual financial statements. Significant judgements include:

Trade Receivables

The management assesses its trade receivables for impairment at each balance sheet date. In determining whether an impairment loss should be recorded in the income statement, the management makes judgements as to whether there is observable data indicating a measurable decrease in the estimated future cash flows from a financial asset.

Fair value estimation

The carrying value less impairment provision of trade receivables and payables are assumed to approximate their fair values. The fair value of financial liabilities for disclosure purposes is estimated by discounting the future contractual cash flows at the current market interest rate that is available to the Authority for similar financial instruments. Fair value of investment property and non current asset held for sale are determined based on open market value by an independent valuer.

Impairment testing

The recoverable amounts of cash-generating units and individual assets have been determined based on the higher of value-in-use calculations and fair values. These calculations require the use of estimates and assumptions. It is reasonably possible that the residual value assumption may change which may then impact the estimations and may then require a material adjustment to the carrying value of the assets.

The management reviews and tests the carrying value of assets when events or changes in circumstances suggest that the carrying amount may not be recoverable. Assets are grouped at the lowest level for which identifiable cash flows are largely independent of cash flows of other assets and liabilities. If there are indications that impairment may have occurred, estimates are prepared of expected future cash flows for each group of assets. Expected future cash flows used to determine the tangible assets are inherently uncertain and could materially change over time. They are significantly affected by a number of factors including supply demand, together with economic factors such as exchange rates, inflation and interest rates.

Useful life and residual value of tangible fixed assets

The estimates of useful lives as translated into depreciation rates are detailed in property, plant and equipment policy on the annual financial statements. These rates and residual lives of the assets are reviewed annually taking cognisance of the forecasted commercial and economic realities and through benchmarking of accounting treatments in the industry.

Contingent liabilities

Management applies its judgement to facts and advice it receives from its attorneys, advocates and other advisors in assessing if an obligation is probable, more likely than not, or remote. This judgement application is used to determine if the obligation is recognised as a liability or to be disclosed as a contingent liability.

1.2 Property, plant and equipment

The cost of an item of property, plant and equipment is recognised as an asset when:

- it is probable that future economic benefits associated with the item will flow to the Authority; and
- the cost of the item can be measured reliably.

Costs include costs incurred initially to acquire or construct an item of property, plant and equipment and costs incurred subsequently to add to, replace part of, or service it. If a replacement cost is recognised in the carrying amount of an item of property, plant and equipment, the carrying amount of the replaced part is derecognised.

Property, plant and equipment is carried at cost less accumulated depreciation and any impairment losses.

Item	Average useful life
Land	Indefinite
Buildings	50 years
Furniture and fixtures	6-7 years
Motor vehicles	4 years
Office equipment	4 years
IT equipment	2 years
Technical Equipment	2-25 years

The residual value and the useful life of each asset are reviewed at each financial period-end.

Each part of an item of property, plant and equipment with a cost that is significant in relation to the total cost of the item shall be depreciated separately.

The depreciation charge for each period is recognised in the income statement unless it is included in the carrying amount of another asset.

The gain or loss arising from the derecognition of an item of property, plant and equipment is included in income statement when the item is derecognised. The gain or loss arising from the derecognition of an item of property, plant and equipment is determined as the difference between the net disposal proceeds, if any, and the carrying amount of the item.

1.3 Financial instruments

Initial recognition

The Authority classifies financial instruments, or their component parts, on initial recognition as a financial asset, a financial liability or an equity instrument in accordance with the substance of the contractual arrangement.

Financial assets and financial liabilities are recognised on the Authority's balance sheet when the Authority becomes party to the contractual provisions of the instrument.

Trade and other receivables

Trade receivables are measured at initial recognition at fair value, and are subsequently measured at amortised cost using the effective interest rate method. Appropriate allowances for estimated irrecoverable amounts are recognised in income statement when there is objective evidence that the asset is impaired. Significant financial difficulties of the debtor, probability that the debtor will enter bankruptcy or financial reorganisation, and default or delinquency in payments (more than 90 days overdue) are considered indicators that the trade receivable is impaired. The allowance recognised is measured as the difference between the asset's carrying amount and the present value of estimated future cash flows discounted at the effective interest rate computed at initial recognition.

The carrying amount of the asset is reduced through the use of an allowance account, and the amount of the loss is recognised in the income statement within operating expenses. When a trade receivable is uncollectible, it is written off against the allowance account for trade receivables. Subsequent recoveries of amounts previously written off are credited against operating expenses in the income statement.

Trade and other receivables are classified as loans and receivables.

Trade and other payables

Trade payables are initially measured at fair value, and are subsequently measured at amortised cost, using the effective interest rate method.

Cash and cash equivalents

Cash and cash equivalents comprise cash on hand and fixed deposits, and other short-term highly liquid investments that are readily convertible to a known amount of cash and are subject to an insignificant risk of changes in value. These are initially and subsequently recorded at fair value.

1.4 Tax

Tax expenses

No provision for taxation is required as the Authority is exempt from taxation in terms of the second schedule, Part I of the Income Tax Act (Cap 52:01).

Accounting Policies (continued)

for the year ended March 31, 2008

1.5 Leases

A lease is classified as a finance lease if it transfers substantially all the risks and rewards incidental to ownership. A lease is classified as an operating lease if it does not transfer substantially all the risks and rewards incidental to ownership.

Operating leases - lessor

Operating lease income is recognised as an income on a straight-line basis over the lease term. Income for leases is disclosed under other income in the income statement.

Operating leases - lessee

Operating lease payments are recognised as an expense on a straight-line basis over the lease term. The difference between the amounts recognised as an expense and the contractual payments are recognised as an operating lease asset. This liability is not discounted. There are no contingent rents applicable as per lease.

1.6 Non-current assets held for sale

Non-current assets classified as held for sale are recognised if their carrying amount will be recovered through a sale transaction rather than through continuing use. This condition is regarded as met only when the sale is highly probable and the asset available for immediate sale in its present condition.

Non-current assets held for sale are measured at the lower of its carrying amount and fair value less costs to sell.

A non-current asset is not depreciated while it is classified as held for sale.

Where the fair value model is adopted for Investment property, such investment property reclassified as held for sale is measured at fair value.

1.7 Impairment of assets

The Authority assesses at each balance sheet date whether there is any indication that an asset may be impaired. If any such indication exists, the Authority estimates the recoverable amount of the asset.

If there is any indication that an asset may be impaired, the recoverable amount is estimated for the individual asset. If it is not possible to estimate the recoverable amount of the individual asset, the recoverable amount of the cash-generating unit to which the asset belongs is determined.

The recoverable amount of an asset or a cash-generating unit is the higher of its fair value less costs to sell and its value in use.

If the recoverable amount of an asset is less than its carrying amount, the carrying amount of the asset is reduced to its recoverable amount. That reduction is an impairment loss.

An impairment loss of assets carried at cost less any accumulated depreciation or amortisation is recognised immediately in income statement. Any impairment loss of a revalued asset is treated as a revaluation decrease.

An entity assesses at each reporting date whether there is any indication that an impairment loss recognised in prior periods for assets may no longer exist or may have decreased. If any such indication exists, the recoverable amounts of those assets are estimated.

1.8 Employee benefits

Short-term employee benefits

The cost of short-term employee benefits, (those payable within 12 months after the service is rendered, such as paid vacation leave and sick leave, bonuses, and non-monetary benefits such as medical care), are recognised in the period in which the service is rendered and are not discounted.

The expected cost of compensated absences is recognised as an expense as the employees render services that increase their entitlement or, in the case of non-accumulating absences, when the absence occurs.

Gratuities are provided for certain employees as per terms of reference of their respective employment contracts.

Defined contribution plans

The Authority operates a defined contribution pension fund for its eligible permanent citizen employees. The fund is registered under the Pension and Provident Funds Act (Chapter 27:03). Payments to defined contribution pension funds are charged as an expense as they fall due.

1.9 Provisions and contingencies

Provisions are recognised when:

- the Authority has a present obligation as a result of a past event;
- it is probable that an outflow of resources embodying economic benefits will be required to settle the obligation; and
- a reliable estimate can be made of the obligation.

The amount of a provision is the present value of the expenditure expected to be required to settle the obligation.

Contingent assets and contingent liabilities are not recognised. Contingencies are disclosed in note 21.

1.10 Revenue

When the outcome of a transaction involving the rendering of services can be estimated reliably, revenue associated with the transaction is recognised by reference to the stage of completion of the transaction at the balance sheet date.

The outcome of a transaction can be estimated reliably when all the following conditions are satisfied:

- the amount of revenue can be measured reliably;
- it is probable that the economic benefits associated with the transaction will flow to the Authority;
- the stage of completion of the transaction at the balance sheet date can be measured reliably; and
- the costs incurred for the transaction and the costs to complete the transaction can be measured reliably.

Revenue is measured at the fair value of the consideration received or receivable and represents the amounts receivable for services provided in the normal course of business net of value added tax.

Revenue comprises service & system licence fees charged to telecommunications operators and radio licence holders. The revenue is stated at net of value added tax. Initial fees charged in relation to the issue of a licence are recognised when the licence is issued. Annual service & systems licence fees are recognised in the year to which they relate.

Interest is recognised, in income statement, using the effective interest rate method.

Rental Income is recognised on a straight-line basis over the lease term.

1.11 Translation of foreign currencies

Foreign currency transactions

A foreign currency transaction is recorded, on initial recognition in Pula, by applying to the foreign currency amount the spot exchange rate between the functional currency and the foreign currency at the date of the transaction.

At each balance sheet date:

- foreign currency monetary items are translated using the closing rate;
- non-monetary items that are measured in terms of historical cost in a foreign currency are translated using the exchange rate at the date of the transaction; and
- non-monetary items that are measured at fair value in a foreign currency are translated using the exchange rates at the date when the fair value was determined.

Exchange differences arising on the settlement of monetary items or on translating monetary items at rates different from those at which they were translated on initial recognition during the period or in previous annual financial statements are recognised in income statement in the period in which they arise.

Cash flows arising from transactions in a foreign currency are recorded in Pula by applying to the foreign currency amount the exchange rate between the Pula and the foreign currency at the date of the cash flow.

1.12 Prior year figures

Prior year figures have been regrouped to conform with current years presentation.

Notes to the Annual Financial Statements

for the year ended March 31, 2008

2. Changes in accounting policy

The annual financial statements have been prepared in accordance with International Financial Reporting Standards on a basis consistent with the prior year except for the adoption of new or revised standards.

During the year, the Authority adopted the following new standards/new amendments and interpretations:

- IAS 1 Presentation of financial statements: Capital Disclosures.
- IFRS 7 - Financial instruments: Disclosures (effective first annual period commencing on or after 1/1/2007)

IAS 1: Presentation of financial statements

This amendment was issued in 2005 and is effective for the financial period commencing on or after 1 January 2007 and requires the Authority to make new disclosures to enable the users of the financial statement to evaluate the Authority's objective, policies and procedures for managing its capital, which is the accumulated surplus of the authority.

IFRS 7: Financial Instruments - Disclosures

This amendment was issued in 2005 and is effective for the financial period commencing on or after 1 January 2007. This standard requires disclosures that enable the users of financial statement to evaluate the significance of the Authority's financial instruments and the nature and extent of risks arising from those financial instruments. The new disclosures are included throughout these annual financial statements. While there has been no effect on the position or result, comparative information has been raised wherever needed for disclosure purpose.

The impact of all other Standards and Interpretations issued and effective are either not applicable or not expected to be material for the current year.

3. Statements and interpretations not yet effective

At the date of authorisation of these annual financial statements, the following Standards and Interpretations applicable for the Authority were in issue but not yet effective:

- IAS 23 - Borrowing costs (effective first annual period commencing on or after 1/1/2009)
- IAS 1 - Presentation of financial statements (effective first annual period commencing on or after 1/1/2009)

IAS 1: Presentation of financial statements

This revised standard is effective for the financial periods beginning on or after 1 January 2009. This amendment affects the presentation of Statement of changes in funds of the Authority and introduces a statement of comprehensive income. The Authority's management will have the option of presenting items of income and expenses and components of other comprehensive income either in a single statement of comprehensive income with sub-totals, or in two separate statements (a separate income statement followed by a statement of other comprehensive income). This amendment does not affect the financial position or results of the Authority but will give rise to additional disclosures.

IAS 23: Borrowing costs

This revised standard is effective for the financial periods beginning on or after 1 January 2009. This amendment requires the capitalisation of borrowing costs to the extent they are directly attributable to the acquisition, or construction of qualifying assets that need a period of time to get ready for their intended use or sale. In accordance with the transitional provisions of the amended standard, no change will be required to account for borrowing costs incurred to this date that have been expended.

The aggregate effect of the standards and interpretations issued but not yet effective are either not applicable or not expected to be material to the Authority.

	2008	2007
	P	P

4. Investment property

Reconciliation of investment property - 2007

	Opening net book value	Classified as held for sale	Closing net book value
Investment property	6 000 000	(6 000 000)	—

Other disclosures

Total rental income from investment property	310 329	322 602
Direct operating expenses from rental generating property	40 619	66 145

5. Property, plant and equipment

	2008			2007		
	Cost	Accumulated depreciation	Carrying value	Cost	Accumulated depreciation	Carrying value
Land and buildings	18 635 610	(2 204 630)	16 430 980	18 890 422	(1 874 628)	17 015 794
Furniture and fixtures	2 205 919	(1 961 176)	244 743	2 236 853	(1 858 387)	378 466
Motor vehicles	2 357 799	(742 410)	1 615 389	1 561 020	(1 142 453)	418 567
Office equipment	1 568 109	(1 472 269)	95 840	1 843 006	(1 631 116)	211 890
IT equipment	4 326 928	(2 730 590)	1 596 338	2 728 767	(2 559 825)	168 942
Technical equipment (ASMS)	91 141 197	(12 891 980)	78 249 217	91 124 135	(3 176 266)	87 947 869
Capital Work in Progress	9 810 242	—	9 810 242	1 526 812	—	1 526 812
Total	130 045 804	(22 003 055)	108 042 749	119 911 015	(12 242 675)	107 668 340

5. Property, plant and equipment (continued)

Reconciliation of property, plant and equipment - 2008

	Opening net book value	Additions	Disposals	Transfers	Depreciation	Closing net book value
Land and buildings	17 015 794	—	(53 812)	(201 000)	(330 002)	16 430 980
Furniture and fixtures	378 466	92 094	(26 195)	—	(199 622)	244 743
Motor vehicles	418 567	1 555 854	—	—	(359 032)	1 615 389
Office equipment	211 890	17 000	(7 475)	—	(125 575)	95 840
IT equipment	168 942	2 033 771	(10 544)	—	(595 831)	1 596 338
Technical equipment (ASMS)	87 947 869	17 062	—	—	(9 715 714)	78 249 217
Capital Work in Progress	1 526 812	8 283 430	—	—	—	9 810 242
	107 668 340	11 999 211	(98 026)	(201 000)	(11 325 776)	108 042 749

Reconciliation of property, plant and equipment - 2007

	Opening net book value	Additions	Disposals	Classified as held for sale	Transfers	Depreciation	Closing net book value
Land and buildings	16 885 743	935 700	(53 812)	(421 838)	—	(329 999)	17 015 794
Furniture and fixtures	664 992	28 831	—	—	—	(315 357)	378 466
Motor vehicles	4 822	427 472	—	—	—	(13 727)	418 567
Office equipment	383 366	42 117	—	—	—	(213 593)	211 890
IT equipment	327 993	122 026	—	—	—	(281 077)	168 942
Technical equipment (ASMS)	—	—	—	—	91 124 135	(3 176 266)	87 947 869
Capital Work in Progress	87 451 791	5 199 156	—	—	(91 124 135)	—	1 526 812
	105 718 707	6 755 302	(53 812)	(421 838)	—	(4 330 019)	107 668 340

		2008 P	2007 P
6. Financial assets by category			
Authority's classification of financial assets by category is as follows:			
2008			
	Loans and receivables	Fair value through profit or loss - designated	Total
Trade and other receivables	8 713 849	—	8 713 849
Universal Service Fund	11 578 517	—	11 578 517
Cash and cash equivalents	—	51 038 195	51 038 195
	20 292 366	51 038 195	71 330 561
2007			
	Loans and receivables	Fair value through profit or loss - designated	Total
Trade and other receivables	10 060 208	—	10 060 208
Universal Service Fund	10 414 082	—	10 414 082
Cash and cash equivalents	—	36 463 801	36 463 801
	20 474 290	36 463 801	56 938 091
7. Trade and other receivables			
Trade receivables		8 342 773	8 769 048
Other receivable		371 076	1 291 160
		8 713 849	10 060 208
Fair value of trade and other receivables			
Trade and other receivables		8 713 849	10 060 208
Impairment provisions are made based on review of individual debtors current credit situation, past performance and other factors and where required, appropriate provisions are raised for impairments.			
Trade and other receivables past due but not impaired			
Trade and other receivables which are less than 3 months past due are not considered to be impaired. At March 31, 2008: P 430 821 (2007: P 2 288 721) were past due but not impaired.			
The ageing of amounts past due but not impaired is as follows:			
1 month past due		65 187	2 230 446
2 months past due		123 059	4 386
3 months past due		242 575	53 889
8. Cash and cash equivalents			
Cash and cash equivalents consist of:			
Cash on hand		500	500
Bank balances		23 412 114	35 602 285
Short-term deposits		39 204 098	11 275 098
		62 616 712	46 877 883

Notes to the annual financial statements (continued)

for the year ended March 31, 2008

	2008	2007
	P	P

8. Cash and cash equivalents (continued)

Cash and cash equivalent at the end of the period include a deposit with Stanbic Bank Botswana Limited of P 11 578 517 (2007: P 10 414 082) held by the Authority on behalf of the Government of Botswana pending establishment of the Universal Service Fund. The cash balance includes interest earned on the deposit upto the balance sheet date.

Credit quality of cash at bank and short term deposits, excluding cash on hand

The credit quality of cash at bank and short term deposits, excluding cash on hand that are neither past due nor impaired are placed with reputed financial institutions which are registered in Botswana. The Authority's bankers in Botswana are not rated but each of these banks are subsidiaries of major South African, Indian or United Kingdom registered institutions.

9. Non-current assets held for sale

The members of the board resolved to dispose off Plot 4965 (Town houses) and Plot 2624 with developments there on. The details of the investment property are set out below.

The land and building (Plot 2624) was valued by Willy Kathurima Associates (Proprietary) Limited registered independent property valuers, in December 2007 at P 650 000, representing the open market value. The management decided to retain the carrying value of P 421 838 as its fair value after considering the present state of the property and its use.

The investment property (Plot 4965) was valued by Willy Kathurima Associates (Proprietary) Limited registered independent property valuers, in December 2007 at P 6 250 000, representing the open market value. However, the management decided to retain the current carrying value of P 6 201 000 as they are of the opinion that no material changes in the circumstance or use of this investment property occurred during the year which resulted in increase in value of the property.

Assets and liabilities

Non-current assets held for sale

Property, plant and equipment	421 838	421 838
Investment property	6 201 000	6 000 000

10. Capital disclosure

The Authority's objective when maintaining accumulated surplus is to safeguard the ability to continue as a going concern, so that it can provide services to its customers by pricing services appropriately.

The capital structure of the Authority consists of accumulated surplus as disclosed in the statement of changes in funds. However, there are no externally imposed capital requirements applicable to the Authority.

During the year ended 31 March 2008, the Authority's strategy of managing funds has remained unchanged from the year ended 31 March 2007.

Accumulated surplus	159 112 355	150 084 237
---------------------	-------------	-------------

11. Government of Botswana - Universal Service Fund

Donations payable to the Government of Botswana - Universal Service Fund	12 500 000	12 500 000
Interest earned on deposit - Universal Service fund	1 578 517	414 082
	14 078 517	12 914 082

In the board meeting held on 3 July 2008, it was resolved to make an additional donation of P 4 million towards Universal Service Fund.

	2008 P	2007 P
12. Trade and other payables		
Trade payables	6 064 153	1 283 254
Value Added Tax	357 216	383 899
Short term employee benefits	2 779 637	2 322 743
Other payables	1 034 191	1 619 366
	10 235 197	5 609 262

Included in the other payables is an amount of P 705 026 (2007: P 637 620) held on behalf of National Broadcasting Board representing the amounts collected on behalf of the board.

13. Financial liabilities by category

Authority's classification of financial liabilities by category is as follows:

2008

	Financial liabilities at amortised cost	Total
Trade and other payables	10 235 197	10 235 197
Government of Botswana - Universal Service Fund	14 078 517	14 078 517
	24 313 714	24 313 714

2007

	Financial liabilities at amortised cost	Total
Trade and other payables	5 609 262	5 609 262
Government of Botswana - Universal Service Fund	12 914 082	12 914 082
	18 523 344	18 523 344

14. Revenue

Turnover related fees	49 056 966	40 841 472
Radio license fees	7 930 657	5 257 675
System license fees	3 323 985	1 729 508
Service license fees	773 872	867 707
	61 085 480	48 696 362

15. Surplus for the year

Surplus the year is stated after accounting for the following:

Other income

Operating lease income - Contractual	(708 836)	(534 410)
--------------------------------------	-----------	-----------

Operating lease charges

Premises		
• Contractual amounts	59 100	19 700
(Profit) on sale of property, plant and equipment	(333 252)	(45 052)
Loss on exchange differences	—	9 720
Depreciation on property, plant and equipment	11 325 776	4 330 019
Employee costs	19 847 919	18 248 788

Notes to the annual financial statements (continued)

for the year ended March 31, 2008

	2008 P	2007 P
15. Surplus for the year (continued)		
Consulting and professional fees	8 934 918	7 359 011
Conference expenses	1 401 508	2 492 597
Repairs and maintenance	1 991 217	290 538
Subscription	1 249 475	493 040
Travelling expenses (including local)	1 959 981	2 184 108
16. Finance income		
Interest revenue		
Bank	4 093 142	4 714 811
17. Auditors' remuneration		
Fees	41 501	43 108
18. Cash generated from operations		
Profit before taxation	12 037 490	6 563 953
Adjustments for:		
Depreciation and amortisation	11 325 776	4 330 019
Profit on sale of assets	(333 252)	(45 052)
Finance income	(4 093 142)	(4 714 811)
Changes in working capital:		
Trade and other receivables	1 346 363	(3 152 863)
Prepayments	214 939	(109 939)
Trade and other payables	4 625 935	(1 551 511)
	25 124 109	1 319 796
Dividends	(3 074 924)	—
20. Commitments		
Authorised capital expenditure		
Already contracted for but not provided for		
• Property, plant and equipment	5 264 374	12 057 205
Not yet contracted for and authorised by the members of the board	—	500 000
This committed expenditure will be financed by existing cash resources or funds internally generated.		
Operating leases - as lessor (income)		
Minimum lease payments due - within one year	956 412	106 950
Certain of the Authority's property is held to generate rental income. Lease agreements are non-cancelable and have terms from 1 to 2 years. There are no contingent rents receivable as per lease agreement. The rentals are renegotiated at the anniversary of the lease agreements to align with the open market rates.		
Donation committed to be paid to the Universal Service Fund	4 000 000	—

	2008	2007
	P	P

21. Contingencies

During the year the Authority lost a case in respect of a dispute with one of the major operators over the definition of “Net turnover related fee” and its impact on calculation of turnover fees paid by the above operator. There is a potential for identical claim being made by the other mobile operators on the Authority for similar situation relying on court decision. This matter raises a material contingency and uncertainty about potential claim which could be material to the Authority.

Guarantee issued by the authority in favour of First National Bank of Botswana Limited towards the employees’ housing loan, wherein Authority has guaranteed upto 100% of the outstanding balance. The balance outstanding at the balance sheet date under this guarantee amounts to P 5 225 554 (2007: P 5 010 348).

Guarantee issued by the authority in favour of Bank of Baroda (Botswana) Limited towards the employees’ personal loans, wherein Authority has guaranteed up to 50% of the outstanding balance. The balance outstanding at the balance sheet date under this guarantee amounts to P Nil (2007: P 1 805 979).

Guarantee issued by the authority in favour of Stanbic Bank Botswana Limited towards the employees’ housing, car and personal loan with a limit of P 5 000 000. The Authority has given guarantee upto 25% of the outstanding balance on the housing loans and 50% guarantee on car and personal loans on the outstanding balances. The balance outstanding at the balance sheet date under this guarantee amounts to P 1 087 273 (2007: P 1 554 524).

Guarantee issued by the authority in favour of WesBank (a division of First National Bank of Botswana Limited) towards guarantee for employees’ car loan, with a maximum facility of P 5 000 000, wherein Authority has guaranteed up to 50% of the outstanding balance. The balance outstanding at the balance sheet date under this guarantee amounts to P 1 935 348 (2007: P 1 970 322).

Guarantee issued by the authority in favour of Barclays Bank of Botswana Limited towards guarantee for employees’ car loan, with a maximum facility of P 5 000 000, wherein the authority has guaranteed upto 100% of the outstanding balance. The balance outstanding at the balance sheet date under this guarantee amounts to P 1 492 438 (2007: P 1 219 843).

There is a lawsuit instituted by the Authority against Botswana Unified Revenue Service for refund of withholding tax amounting to USD 1.2 million (2007: USD 1.2 million). This case is still pending with the court. Since the Authority is the claimant in the case, the contingent liability facing the Authority is with respect to legal costs for its attorneys and those of Botswana Unified Revenue Service’s attorneys in the event the Authority loses the case. Such costs are unlikely to exceed P 400 000.

Bank guarantee in favour of Department of Customs and Excise on account of VAT deferral at P 2 500 000 (2007: P 2 500 000).

Notes to the annual financial statements (continued)

for the year ended March 31, 2008

	2008	2007
	P	P
22. Related parties		
Members of the board	Refer to page 6 and 7	
Members of key management	T G Pheko (Chief Executive) M O Tamasiga (Deputy Chief Executive) T Tau C Moapare (Resigned in August 2007) N Mokone T B Koontse M Leburu (Resigned on April 2007) T S Mosinyi O Tsiang M Mokgware B Mine (Acting director since September 2007)	
Related companies	The Authority had transactions with Government, parastatals and other Government interested organisations the normal course of operations. These transactions and these parties were not considered to be related party transactions and related parties. However, National Broadcasting Board is considered as related party, as transactions are in the nature of collection on behalf of this party.	
Related party balances		
Amounts included in Trade receivable (Trade Payable) regarding related parties		
National Broadcasting Board	(705 026)	(637 619)
Related party transactions		
Key Management		
Remuneration paid	3 758 514	4 080 385
Other long term employee benefits	811 396	824 781
Consulting fees paid to former Chief Executive retained as consultant from January 07 to March 07	—	450 000

2008
P

2007
P

23. Risk management

The Authority's activities expose it to a variety of financial risks: market risk (including currency risk, fair value interest rate risk, cash flow interest rate risk and price risk), credit risk and liquidity risk.

The Authority's overall risk management program focuses on the unpredictability of financial markets and seeks to minimise potential adverse effects on the Authority's financial performance. The management provides written principles for overall risk management, as well as written policies covering specific areas, such as foreign exchange risk, interest rate risk, credit risk and investment of excess liquidity.

Liquidity risk

Prudent liquidity risk management implies maintaining sufficient cash and marketable securities, the availability of funding through an adequate amount of cash resources and the ability to close out short term positions. Due to the dynamic nature of the underlying businesses, Authority's finance department maintains flexibility in funding by maintaining availability of short term deposits.

The Authority's risk to liquidity is a result of the funds available to cover future commitments. The Authority manages liquidity risk through an ongoing review of future commitments.

The table below analyses the Authority's financial liabilities classified into relevant maturity groupings based on the remaining period at the balance sheet to the contractual maturity date. The amounts disclosed in the table are the contractual undiscounted cash flows. Balances due within 12 months equal their carrying balances as the impact of discounting is not significant.

At March 31, 2008	Less than 1 Year	Between 1 and 2 years	Between 2 and 5 years	Over 5 years
Trade and other payables	10 235 197	—	—	—
Government of Botswana - Universal Service Fund	—	14 078 517	—	—
At March 31, 2007	Less than 1 Year	Between 1 and 2 years	Between 2 and 5 years	Over 5 years
Trade and other payables	5 609 920	—	—	—
Dividend payable	3 074 920	—	—	—
Government of Botswana - Universal Service Fund	—	12 914 082	—	—

Interest rate risk

The Authority is exposed to various risks associated with the effect of fluctuations in the prevailing levels of market rates of interest on its cash resources and investments. The cash resources are managed to ensure that surplus funds are invested in a manner to achieve maximum returns while minimising risks. The Authority places its funds both in fixed interest earning deposits (fixed deposits) and fluctuating interest earning deposits (call deposits). The interest rates of funds placed under fluctuating interest earning deposits are adjusted on a short term basis based on changes in the prevailing market related interest rates. Further, these deposits are due on demand. The fixed deposits amounting to P 39 million (2007: P 17 million) are exposed to fair value interest rate risk and cash flow interest rate risk. However considering the short term maturity of 90 days for these deposits, these risks are minimised.

Cash flow interest rate risk

Financial instrument	Current interest rate	Due in less than a year	Due in one to two years	Due in two to three years	Due in three to four years	Due after five years
3 months fixed deposits	11.47%	39 204 098	—	—	—	—

Notes to the annual financial statements (continued)

for the year ended March 31, 2008

	2008	2007
	P	P

23. Risk management (continued)

Credit risk

Credit risk consists mainly of cash deposits, cash equivalents and trade debtors. The authority only deposits cash with major banks with high quality credit standing.

Credit risk refers to the risk that a counter party will default on its contractual obligations resulting in financial loss to the Authority. The financial assets of the Authority, which are subject to credit risk, consist mainly of cash resources, short-term investments and receivables. Trade receivables are mainly from three major operators from telecommunication sector, amounting to P 7.05 million at the year-end. The maximum credit exposure on trade and other receivables is limited to P 8.71 million. The management evaluate credit risk relating to its debtors on an ongoing basis and where appropriate, makes adequate provisions for bad and doubtful debts. The cash resources are placed with reputable financial institutions and limits exposure to any one counter party. Where appropriate, adequate provisions are made for receivables.

The Authority has also provided guarantees to banks for various employee loans sanctioned by the banks. This guarantee exposes the Authority to credit risk. Refer to note 21 for additional details.

Foreign exchange risk

The Authority does not hedge foreign exchange fluctuations.

Surplus is less sensitive to movement in Pula/US dollar exchange rates in 2008 than 2007 because of the low level amount of US dollar-denominated liabilities.

Foreign currency exposure at balance sheet date

Liabilities

Trade payables - USD 260 935 (2007: USD 115 523)	1 749 049	724 864
--	-----------	---------

Detailed Income Statement

for the year ended March 31, 2008

	Note(s)	2008 P	2007 P
Revenue			
Rendering of services		49 056 966	40 841 472
Service license fees		773 872	867 707
Radio license fees		7 930 657	5 257 675
System license fees		3 323 985	1 729 508
	14	61 085 480	48 696 362
Other income			
Rental income		708 836	535 410
Bad debts recovered		—	401 317
Other income		70 946	52 156
Interest received	16	4 093 142	4 714 811
Gains on disposal of assets		333 252	45 052
Profit on exchange differences		—	9 720
		5 206 176	5 758 466
Expenses (Refer to page 66)		(54 254 166)	(47 890 875)
Surplus for the year		12 037 490	6 563 953

Detailed Income Statement

for the year ended March 31, 2008

	Note(s)	2008 P	2007 P
Operating expenses			
Advertising		(417 903)	(822 869)
Assessment rates & municipal charges (4 667) (5 540)			
Auditors remuneration	17	(41 501)	(43 108)
Bank charges		(73 724)	(86 602)
Cleaning		(95 050)	(71 119)
Computer expenses		(72 317)	(1 776)
Consulting and professional fees		(8 934 918)	(7 359 011)
Consumables		(16 918)	(9 891)
Depreciation, amortisation and impairments		(11 325 776)	(4 330 019)
Donations		(451 046)	(586 508)
Employee costs		(19 847 919)	(18 248 788)
Entertainment		(1 402)	(7 591)
Board expenses		(342 327)	(841 095)
Conference expenses		(1 401 508)	(2 492 597)
Functions hosted by BTA		(265 584)	(1 257 702)
Internet		(852 545)	(202 712)
Donation to Government of Botswana		—	(2 500 000)
Gifts		—	(3 093)
Insurance		(757 090)	(725 838)
Lease rentals on operating lease		(59 100)	(19 700)
Legal expenses		(514 182)	(919 756)
Newspaper, books and periodicals		(76 656)	(50 259)
Motor vehicle expenses		(165 848)	(140 208)
Postage		(46 767)	(40 448)
Printing and stationery		(443 366)	(452 579)
Protective clothing		(30 884)	(34 210)
Repairs and maintenance		(1 991 217)	(290 538)
Security		(1 051 844)	(507 160)
Staff welfare		(139 087)	(172 169)
Subscriptions		(1 249 475)	(493 040)
Telephone and fax		(841 389)	(805 003)
Training		(555 266)	(1 500 275)
Travel - local		(572 074)	(515 716)
Travel - overseas		(1 387 907)	(1 668 392)
Utilities		(226 909)	(685 563)
		(54 254 166)	(47 890 875)

Corporate Information

Country of incorporation and domicile	Botswana
Nature of business and principal activities	The Authority is a body corporate, established under the Telecommunications Act No 15 of 1996 (As amended by Act No 38 of 2004) to regulate, supervise and promote the provision of efficient telecommunication services in Botswana.
Members of the board	Dr. J Mothibi (Chairman) Dr. T Nyamadzabo Dr. T Matome Dr. M Mpotokwane (Vice Chairman) Mr. R C Eaton
Chief Executive	Mr. T G Pheko
Business address	Plot 206/207 Independence Avenue Extension 5 Gaborone Botswana
Postal address	Private Bag 000495 Gaborone Botswana
Bankers	First National Bank of Botswana Limited Barclays Bank of Botswana Limited Standard Chartered Bank Botswana Limited Bank of Baroda (Botswana) Limited Stanbic Bank Botswana Limited
Auditors	Grant Thornton
Secretary	Mrs. T Tau (Appointed on 26/04/2007)